

Sony Group Summary

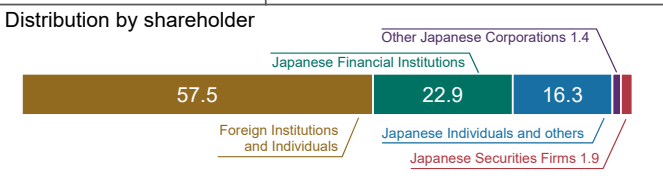
(Published on Nov 1, 2018)

Corporate Information

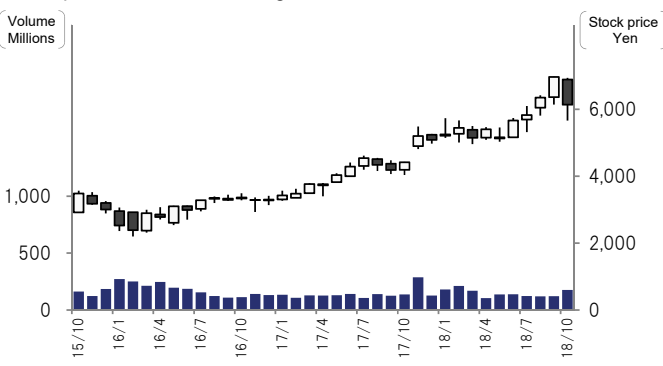
Company Name	Sony Corporation
Founded	May 7, 1946
Headquarters	1-7-1 Konan Minato-ku, Tokyo, 108-0075, Japan
TEL	81-3-6748-2111
Representative Corporate Executive Officers	President and CEO Kenichiro Yoshida Senior Executive Vice President, CFO Hiroki Totoki
Common stock	865.7 Billion yen (As of Mar 31, 2018)

Stock information (As of Mar 31, 2018)

Number of Shares	1,266,552,149
Number of shareholders	499,291
Listed stock exchanges	Tokyo Stock Exchange / New York Stock Exchange



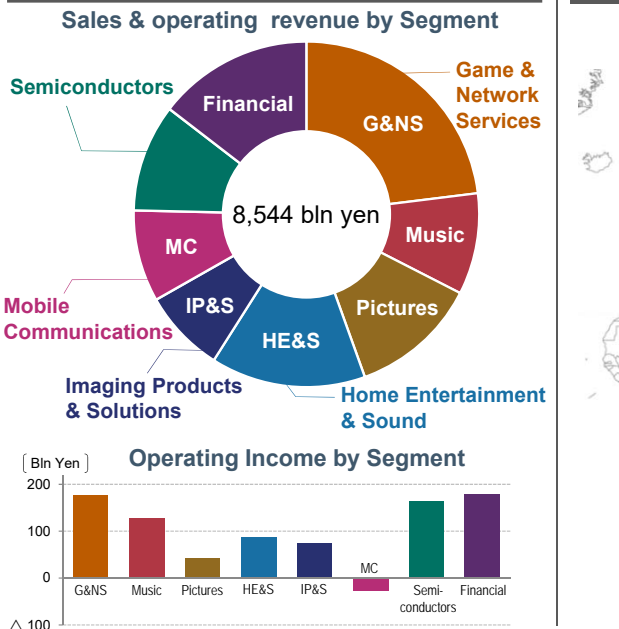
Stock price and volume change (Tokyo Stock Exchange - Monthly basis)



Mission / Vision

Mission	A Company that inspires and fulfills your curiosity
Vision	Using our unlimited passion for technology, content and services to deliver groundbreaking new excitement and entertainment, as only Sony can.

FY2017 results by segment



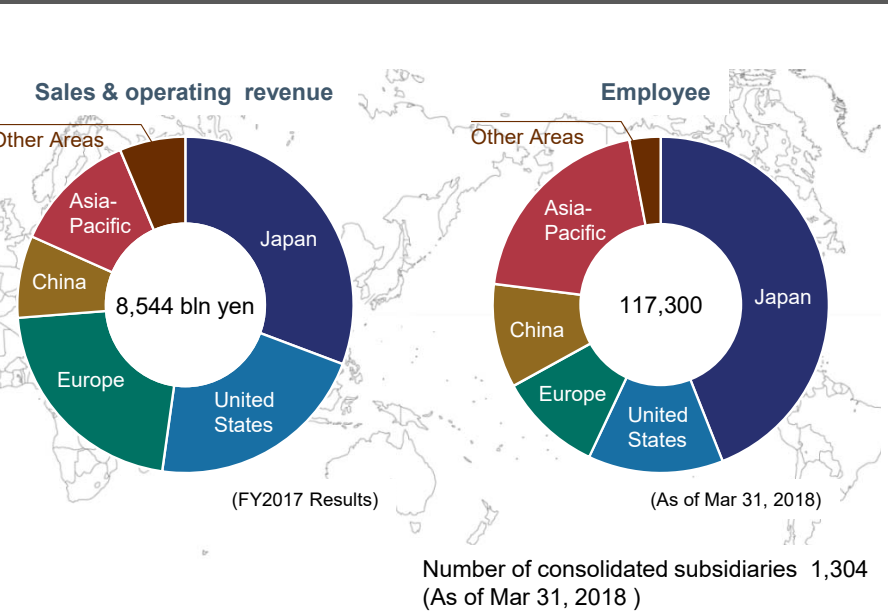
3rd Mid-Range Plan (FY18-20) Financial Targets

Operating Cash Flow 3 year total	2 trillion yen+ (excluding Financial Services)
ROE	Maintain 10%+

FY2018 financial forecast

Sales & operating revenue	8,700 billion yen
Operating Income	870 billion yen

Sales & operating revenue / Employee personnel by geographic segment



Major Products • Brands

G&NS	Music	Pictures	HE&S	IP&S	MC	Semiconductors	Financial
							<ul style="list-style-type: none"> Sony Life Sony Assurance Sony Bank Sony Lifecare