

## Sony Group Summary

(Published on Jun 5, 2018)

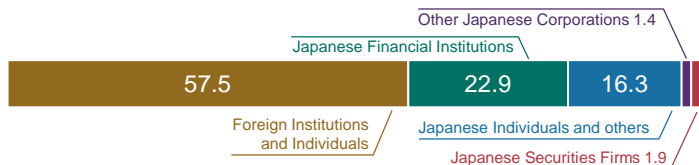
### Corporate Information

Company Name	Sony Corporation
Founded	May 7, 1946
Headquarters	1-7-1 Konan Minato-ku, Tokyo, 108-0075, Japan
TEL	81-3-6748-2111
Representative Corporate Executive Officers	President and CEO Kenichiro Yoshida EVP CFO Hiroki Totoki
Common stock	865.7 Billion yen (As of Mar 31, 2018)

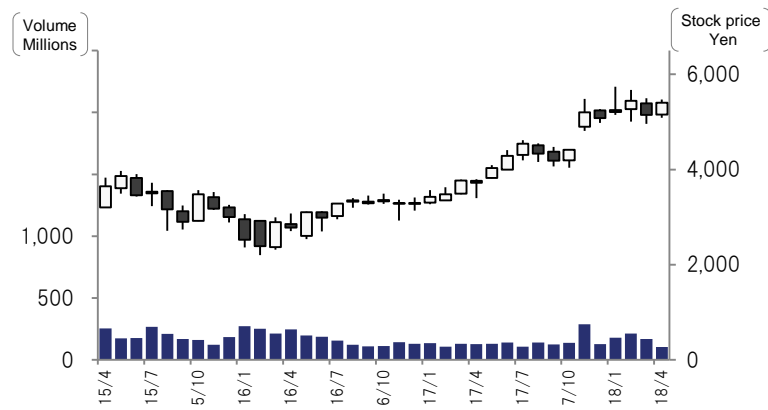
### Stock information (As of Mar 31, 2018)

Number of Shares	1,266,552,149
Number of shareholders	499,291
Listed stock exchanges	Tokyo Stock Exchange / New York Stock Exchange

### Distribution by shareholder



### Stock price and volume change (Tokyo Stock Exchange - Monthly basis)

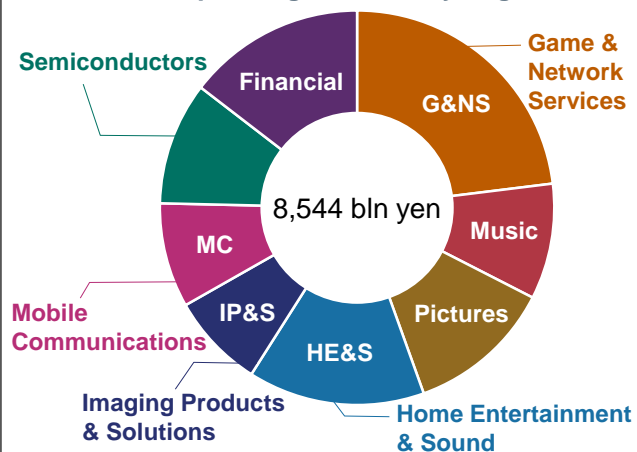


### Mission / Vision

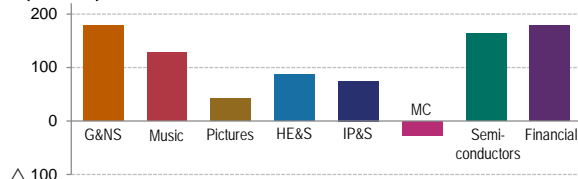
Mission	A Company that inspires and fulfills your curiosity
Vision	Using our unlimited passion for technology, content and services to deliver groundbreaking new excitement and entertainment, as only Sony can.

### FY2017 results by segment

#### Sales & operating revenue by Segment



#### Operating Income by Segment



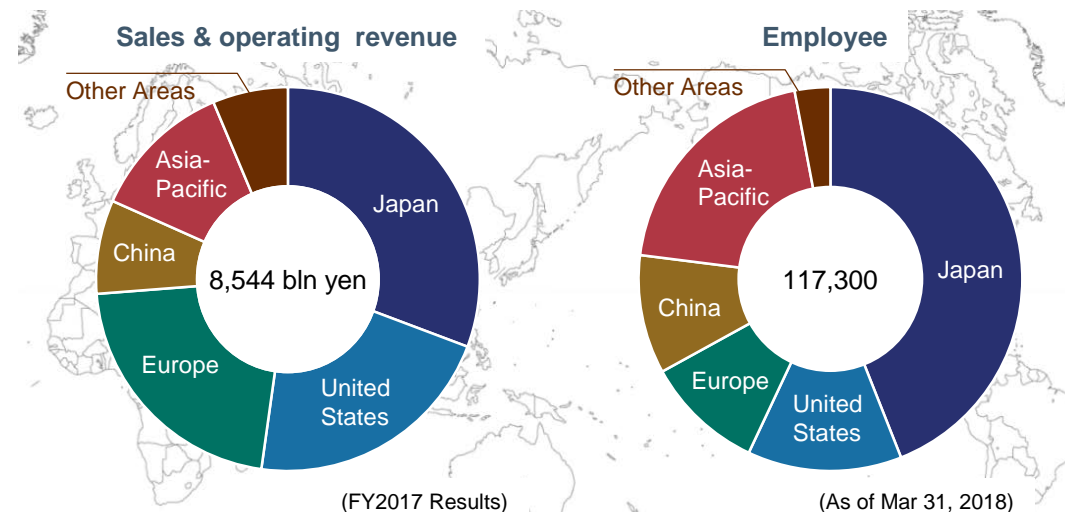
### 3rd Mid-Range Plan (FY18-20) Financial Targets

Operating Cash Flow 3 year total	2 trillion yen+ (excluding Financial Services)
ROE	Maintain 10%+

### FY2018 financial forecast

Sales & operating revenue	8,300 billion yen
Operating Income	670 billion yen

### Sales & operating revenue / Employee personnel by geographic segment



Number of consolidated subsidiaries 1,304 (As of Mar 31, 2018)

### Major Products - Brands

G&NS	Music	Pictures	HE&S	IP&S	MC	Semiconductors	Financial
							<ul style="list-style-type: none"> <li>Sony Life</li> <li>Sony Assurance</li> <li>Sony Bank</li> <li>Sony Lifecare</li> </ul>