

Sony Group Summary

(Published on February 2, 2018)

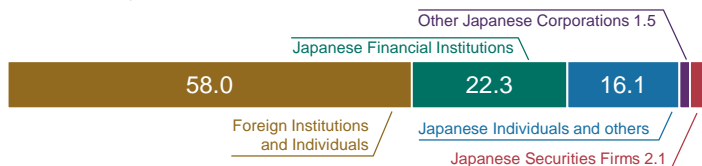
Corporate Information

Company Name	Sony Corporation
Founded	May 7, 1946
Headquarters	1-7-1 Konan Minato-ku, Tokyo, 108-0075, Japan
TEL	81-3-6748-2111
Representative Corporate Executive Officers	President and CEO Kazuo Hirai Executive Deputy President and CFO Kenichiro Yoshida
Common stock	860.6 Billion yen (As of Mar 31, 2017)

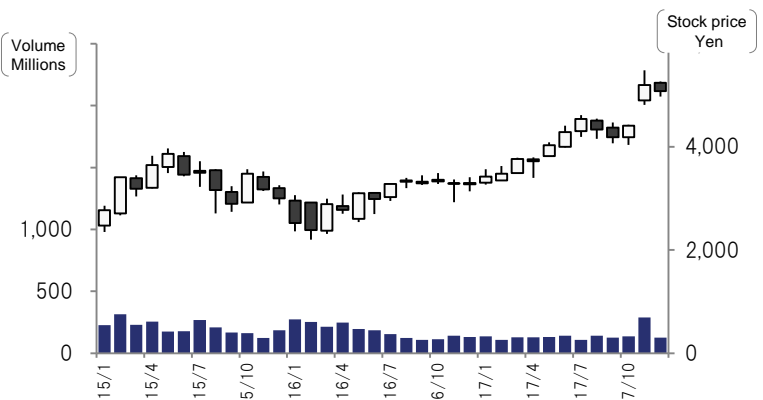
Stock information (As of Sep 30, 2017)

Number of Shares	1,264,649,260
Number of shareholders	484,812
Listed stock exchanges	Tokyo Stock Exchange / New York Stock Exchange

Distribution by shareholder



Stock price and volume change (Tokyo Stock Exchange - Monthly basis)



Mission / Vision

Mission	A Company that inspires and fulfills your curiosity
Vision	Using our unlimited passion for technology, content and services to deliver groundbreaking new excitement and entertainment, as only Sony can.

FY2017 financial targets

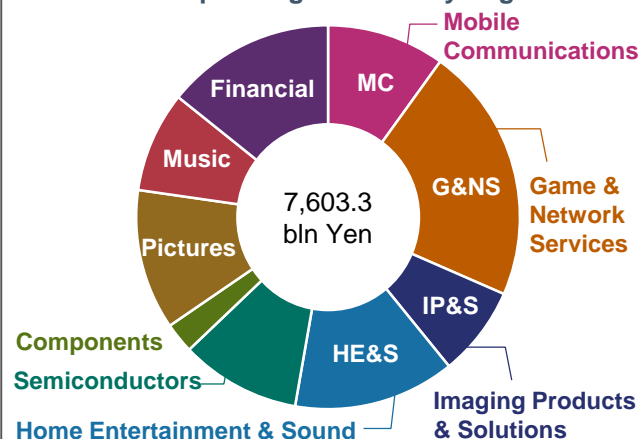
ROE	10% +
Operating Income	500 billion yen +

FY2017 financial forecast

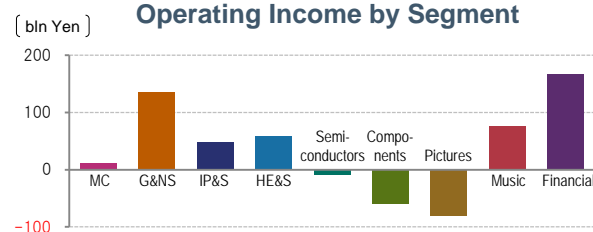
Sales & operating revenue	8,500 billion yen
Operating Income	720 billion yen

FY2016 results by segment

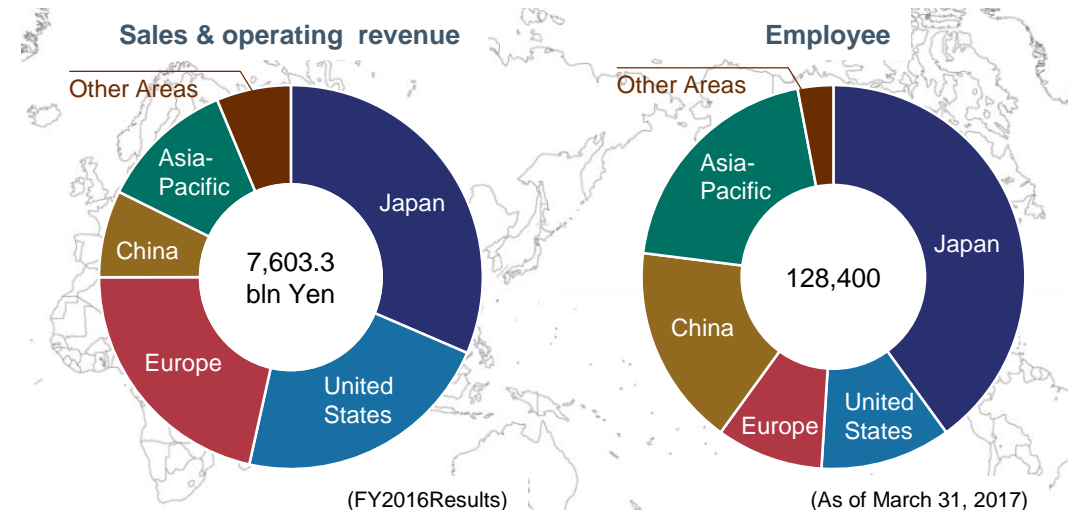
Sales & operating revenue by Segment



Operating Income by Segment



Sales & operating revenue / Employee personnel by geographic segment



Number of consolidated subsidiaries 1,292 (As of March 31 2017)

Major Products - Brands

MC	G&NS	IP&S	HE&S	Semiconductors	Components	Pictures	Music	Financial