

# Remote Controller

Setup software RM-IP Setup Tool guide  
Software Version 1.0

---

# Table of Contents

|                                                      |           |
|------------------------------------------------------|-----------|
| <b>Introduction .....</b>                            | <b>3</b>  |
| Using This Manual .....                              | 3         |
| <b>Downloading and Starting the Software .....</b>   | <b>3</b>  |
| Preparing a PC .....                                 | 3         |
| Downloading the Software .....                       | 3         |
| Starting the Software .....                          | 4         |
| <b>Configuring Cameras and Remote Controllers...</b> | <b>4</b>  |
| Configuring the Cameras .....                        | 4         |
| Configuring the Remote Controllers .....             | 6         |
| <b>Creating a Camera Table.....</b>                  | <b>7</b>  |
| <b>Other Operations.....</b>                         | <b>10</b> |
| Saving Settings .....                                | 10        |
| Importing a Saved Camera Table .....                 | 10        |
| Exiting the Software .....                           | 10        |
| Deleting the Software .....                          | 10        |
| <b>Configuring Windows Firewall .....</b>            | <b>11</b> |
| When using Windows 7 .....                           | 11        |
| When using Windows 8.1 or Windows 10 .....           | 12        |

## NOTICE TO USERS

© 2017 Sony Corporation. All rights reserved. This manual or the software described herein, in whole or in part, may not be reproduced, translated or reduced to any machine readable form without prior written approval from Sony Corporation.

SONY CORPORATION PROVIDES NO WARRANTY WITH REGARD TO THIS MANUAL, THE SOFTWARE OR OTHER INFORMATION CONTAINED HEREIN AND HEREBY EXPRESSLY DISCLAIMS ANY IMPLIED WARRANTIES OF MERCHANTABILITY OR FITNESS FOR ANY PARTICULAR PURPOSE WITH REGARD TO THIS MANUAL, THE SOFTWARE OR SUCH OTHER INFORMATION. IN NO EVENT SHALL SONY CORPORATION BE LIABLE FOR ANY INCIDENTAL, CONSEQUENTIAL OR SPECIAL DAMAGES, WHETHER BASED ON TORT, CONTRACT, OR OTHERWISE, ARISING OUT OF OR IN CONNECTION WITH THIS MANUAL, THE SOFTWARE OR OTHER INFORMATION CONTAINED HEREIN OR THE USE THEREOF.

Sony Corporation reserves the right to make any modification to this manual or the information contained herein at any time without notice. The software described herein may also be governed by the terms of a separate user license agreement.

- Microsoft and Windows are registered trademarks of Microsoft Corporation in the United States and/or other countries.
- Intel and Core are registered trademarks of Intel Corporation or its subsidiaries in the United States and other countries.

All other company and product names are trademarks or registered trademarks of the respective companies or their respective makers.

---

# Introduction

This document describes how to use the RM-IP Setup Tool setup software for configuring Sony remote controllers and cameras that support the VISCA over IP protocol connected by LAN connection.

Before use, connect the remote controllers, cameras, and the PC on which this software is installed. Turn on each device in turn when performing the configuration. For details about connecting devices, refer to the operating instructions of each device.

---

## Using This Manual

The Operating Instructions is designed to be read on a computer display.

The content you need to know in order to use the unit is described here.

Read it before you operate the unit.

### Jumping to a related page

When you read the instructions on a computer display and click on the related part of the relevant page that is being displayed, you jump to the related page. Relevant pages can be searched easily.

### Display examples

The displays described in this manual are explanatory examples. Note that some displays may be different from the ones that actually appear.

### Printing the Operating Instructions

Depending on your system, certain displays or illustrations in the Operating Instructions, when printed out, may differ from those that appear on your screen.

### Terminology in this document

In this document, a remote controller that supports VISCA over IP is referred to as a “remote controller,” and an IP camera that can be configured using this software is referred to as a “camera.”

---

# Downloading and Starting the Software

---

## Preparing a PC

Prepare a PC on which to install the software. The required system configuration is given below (as of March, 2017).

- CPU: Intel Core 2 Duo 2.4 GHz or higher (recommended)
- Memory: 1 GB or more (recommended)
- Hard disk: More than 50 MB free space
- OS: Microsoft Windows 7, Windows 8.1 Pro, Windows 10 Pro 32-bit or 64-bit version

### Notes

- RM-IP Setup Tool may not operate correctly if you use a personal firewall or antivirus software on your computer. In this case, disable the software.
- If you are using Windows 7, Windows 8.1, or Windows 10, disable the Windows Firewall function. Otherwise, the RM-IP Setup Tool will not operate correctly. For details about configuration, see “When using Windows 7” (page 11) or “When using Windows 8.1 or Windows 10” (page 12).
- If using Windows 10, turn tablet mode off.

---

## Downloading the Software

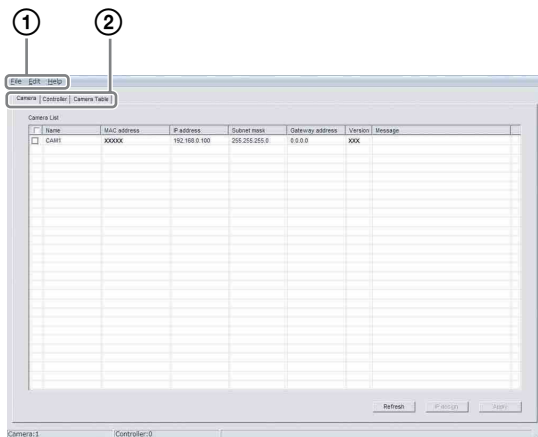
- 1 Download “RM-IP Setup Tool” from the download site.
- 2 Uncompress the zip file, and copy “RM-IPSetupTool.exe” to any location on the PC.
- 3 Double-click “RM-IPSetupTool.exe.”
- 4 Connect the PC on which the software is installed to the network of the same segment as the remote controllers and cameras. For details about PC connection, refer to the Operating Instructions of the remote controller.
- 5 Configure the network settings on the PC. Set the IP address and subnet mask of the PC to the same network segment as the target remote controllers and cameras to be configured.

### Note

Remote controllers and cameras that are connected to a different segment than the PC cannot be configured.

## Starting the Software

Double-click the RM-IP Setup Tool icon to start the RM-IP Setup Tool. The following screen appears. The name and function of the parts of the setup screen is described below.



| No. | Name              | Function                                                                                                                                                                                                                                                                           |
|-----|-------------------|------------------------------------------------------------------------------------------------------------------------------------------------------------------------------------------------------------------------------------------------------------------------------------|
| ①   | Menu bar          | Click a menu and select a sub-menu item to execute the corresponding menu function.                                                                                                                                                                                                |
| ②   | Setup screen tabs | Click to display the corresponding setup screen tab.<br><b>Camera</b> tab: Displays the camera setup screen (page 4).<br><b>Controller</b> tab: Displays the remote controller setup screen (page 6).<br><b>Camera Table</b> tab: Displays the camera table setup screen (page 7). |

### Note

The buttons at the bottom of the screen vary depending on the selected tab.

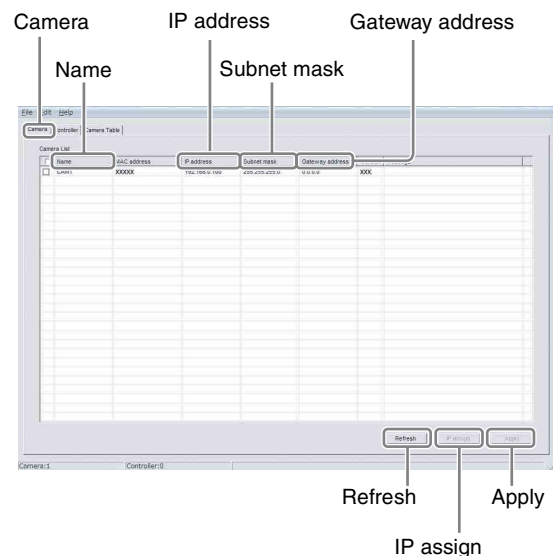
## Configuring Cameras and Remote Controllers

To control cameras from a remote controller, the IP address of the cameras and remote controller must be assigned.

Perform this configuration when the cameras and remote controllers are first connected, and when adding a camera or remote controller.

### Configuring the Cameras

- 1 Turn on the remote controllers, cameras, and other devices that are connected to the network.
- 2 Start RM-IP Setup Tool and click the **Camera** tab. The **Camera List** screen appears. Cameras connected to the same segment are displayed in the list.



**MAC address** is a unique address and cannot be changed.

### Notes

- If the number of cameras listed on the screen differs from the actual number of cameras on the network, click **Refresh** to update the screen. If the numbers are still different, check the connections by referring to the Operating Instructions of the remote controller and camera.
- The message “User Account Control - An unidentified program wants access to your computer” may appear. In this case, click **Allow**.
- Cameras that are connected to a different segment than the PC on which RM-IP Setup Tool is

installed cannot be detected. To set a camera that is connected to a different segment, see “To control a camera in a different segment” (page 9).

#### Tip

For details about checking the MAC address, refer to the operating instructions of each device.

### 3 Set the camera name.

Enter the camera name in the **Name** column. The camera name is used when creating the camera table. Setting a name that is easy to identify is convenient when changing settings.

#### Tip

You can use any of the following characters (up to 8 characters) in the camera name.

Space , ! # \$ % & ' ( ) \* + - . / 0 1 2 3 4 5 6 7 8 9 ; < = > ? @ A B C D E F G H I J K L M N O P Q R S T U V W X Y Z [ \ ] ^ \_ ` a b c d e f g h i j k l m n o p q r s t u v w x y z { | }

### 4 Set the IP address.

- Enter the IP address in the **IP address** column.
- Enter the subnet mask in the **Subnet mask** column.
- Enter the default gateway address in the **Gateway address** column.

When you enter or change a name or IP address, etc., the checkbox for that camera will be marked.

#### Note

**Subnet mask** and **Gateway address** entry is supported only for BRBK-IP10/IP7Z firmware version 2.1 or higher.

### 5 Click **Apply**.

The setting of each camera with its checkbox marked is applied to that camera.

#### Notes

- If IP addresses are assigned automatically by clicking **IP assign** before clicking **Apply**, any settings you have entered will be replaced.
- After settings are applied, the corresponding cameras may reboot, depending on the camera. In this case, do not click **Refresh** until all the cameras have finished rebooting and images are output normally. If the IP address or other setting is changed while rebooting, the setting will not be applied correctly even if **Apply** is clicked. Check that all have finished rebooting, and then click **Apply**.

### 6 Click **Refresh**.

An updated list of the applied settings is displayed.

#### Tip

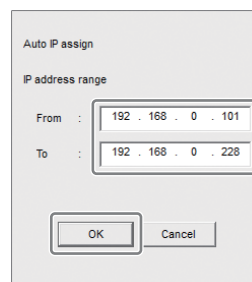
If multiple cameras are connected, it is possible to individually identify cameras by their MAC address displayed in the camera list. We recommend that you make a note of the MAC address of each device beforehand. If you do not know the MAC address of a camera, try connecting and configuring each camera one at a time using the following procedure.

1. Turn on the camera to configure only.
2. Click **Refresh** on the **Camera List** screen. Only cameras that are turned on appear in the list.
3. Configure the camera settings.
4. Repeat steps 1 to 3 to configure other cameras.

### To assign IP addresses automatically to multiple cameras

You can assign IP addresses to multiple cameras automatically.

- 1 Mark the checkbox of the cameras to which you want to assign an IP address.
- 2 Click **IP assign** on the **Camera List** screen. The **Auto IP assign** screen appears.
- 3 Enter the IP address range in **IP address range**. Enter the first IP address in **From**, and the last IP address in **To**.
- 4 Click **OK**.



IP addresses in the specified range are assigned to the cameras automatically.

- 5 Click **Apply** on the **Camera List** screen to apply the settings. To cancel the setting, click **Cancel**.

#### Note

If the number of cameras on the network exceeds the number of IP addresses in the specified range, some cameras will not be assigned an IP address. In this case, after **Apply** is clicked, mark the checkbox for each

camera that has no IP address assigned, and perform IP address auto assignment again.

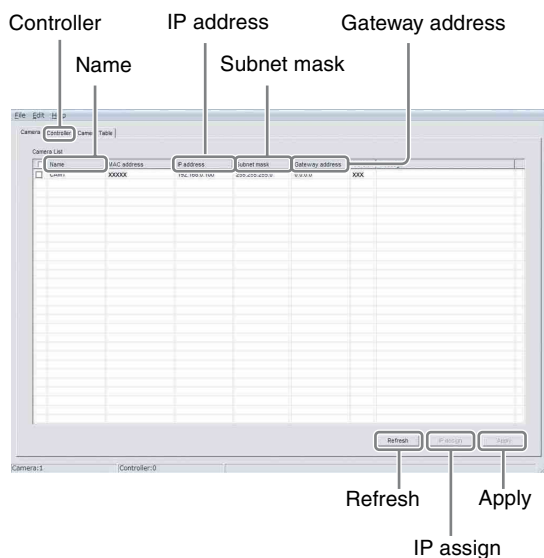
## Configuring the Remote Controllers

- 1 Turn on the remote controllers, cameras, and other devices that are connected to the network.

### Note

Enable access to the remote controllers from an external device in order to update settings. For details, refer to the Operating Instructions of each remote controller.

- 2 Start RM-IP Setup Tool, and click the **Controller** tab. The detected remote controllers are displayed on the **Controller List** screen.



**MAC address** is a unique address and cannot be changed.

### Notes

- If the number of remote controllers listed on the screen differs from the actual number of remote controllers on the network, click **Refresh** to update the screen. If the numbers are still different, check the connections by referring to the Operating Instructions of the remote controller.
- The message “User Account Control - An unidentified program wants access to your computer” may appear. In this case, click **Allow**.
- Remote controllers that are connected to a different segment cannot be detected.

### Tip

For details about checking the MAC address, refer to the operating instructions of each device.

- 3 Enter the remote controller name in the **Name** column.

The remote controller name is used when creating the camera table. Setting a name that is easy to identify is convenient when changing settings.

### Tip

You can use any of the following characters (up to 8 characters) in the remote controller name.

Space , ! # \$ & ' ( ) \* + - . / 0 1 2 3 4 5 6 7 8 9 ; < = > ? @ A B C D E F G H I J K L M N O P Q R S T U V W X Y Z [ \ ] ^ \_ ` a b c d e f g h i j k l m n o p q r s t u v w x y z { | }

- 4 Set the IP address.

- Enter the IP address in the **IP address** column.
- Enter the subnet mask in the **Subnet mask** column.
- Enter the default gateway address in the **Gateway address** column.

When you enter or change a name or IP address, etc., the checkbox for that remote controller will be marked.

- 5 Click **Apply**.

The setting of each remote controller with its checkbox marked is applied to that remote controller.

### Notes

- If IP addresses are assigned automatically by clicking **IP assign** before clicking **Apply**, any settings you have entered will be replaced.
- After settings are applied, the corresponding remote controllers may reboot, depending on the remote controller. In this case, do not click **Refresh** until all the remote controllers have finished rebooting. If the IP address or other setting is changed while rebooting, the setting will not be applied correctly even if **Apply** is clicked. Check that all have finished rebooting, and then click **Apply**.

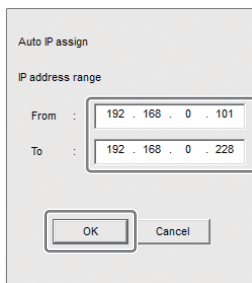
- 6 Click **Refresh**.

An updated list of the applied settings is displayed.

## To assign IP addresses automatically to multiple remote controllers

You can assign IP addresses to multiple remote controllers at the same time automatically.

- 1 Mark the checkbox of the remote controllers to which you want to assign an IP address.
- 2 Click **IP assign** on the **Controller List** screen. The **Auto IP assign** screen appears.
- 3 Enter the IP address range in **IP address range**. Enter the first IP address in **From**, and the last IP address in **To**.
- 4 Click **OK**.



IP addresses in the specified range are assigned to the remote controllers automatically.

- 5 Click **Apply** on the **Controller List** screen to apply the settings. To cancel the setting, click **Cancel**.

### Note

If the number of remote controllers on the network exceeds the number of IP addresses in the specified range, some remote controllers will not be assigned an IP address. In this case, after **Apply** is clicked, mark the checkbox for each remote controller that has no IP address assigned, and perform IP address auto assignment again.

## Creating a Camera Table

To control a camera from a remote controller, camera numbers must be assigned to the cameras on the network. The list of cameras with an assigned camera number is called a “camera table.”

A camera table is created for each remote controller.

### Note

The number of groups will vary depending on the remote controller model. For details, refer to the operating instructions of each device.

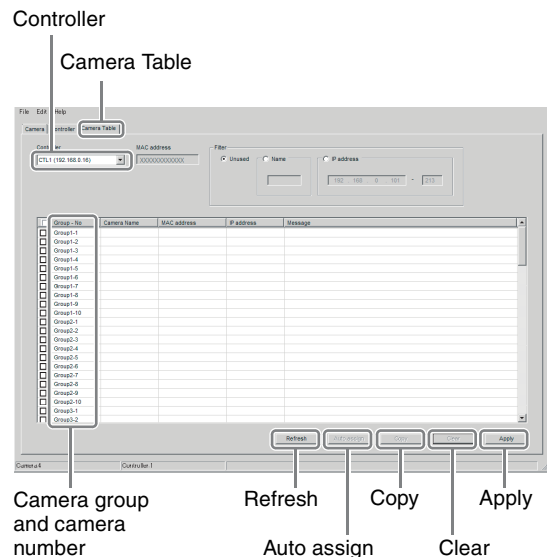
- 1 Turn on the remote controllers, cameras, and other devices that are connected to the network.

### Note

Enable access to the remote controllers from an external device in order to update settings. For details, refer to the Operating Instructions of each remote controller.

- 2 Start RM-IP Setup Tool, and click the **Camera Table** tab.

The **Camera Table** screen appears.



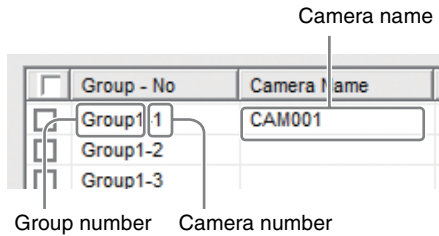
- 3 Select the remote controller for which you want to create a camera table from the **Controller** pull-down menu.

### Notes

- A remote controller that is connected to a different segment cannot be selected.
- If the name of the remote controller is not displayed correctly in the pull-down menu display, click the **Controller** tab to update the **Controller List** screen.

**4** Click the camera name cell in the **Camera Name** column for the camera group and camera number you want to assign.  
The camera names specified in “Configuring the Cameras” (page 4) are displayed in the pull-down menu.

**5** Select the camera that you want to assign from the pull-down menu.



When you set a camera group or camera number, the checkbox for the changed camera will be marked.

**6** Repeat steps **4** to **5** to assign all cameras.

**7** Click **Apply**.

**Notes**

- If camera groups and camera numbers are assigned automatically by clicking **Auto assign** before clicking **Apply**, any settings you have entered will be replaced.
- If the name of the camera is not displayed correctly, click the **Camera** tab to update the **Camera List** screen.
- After settings are applied, the corresponding remote controllers may reboot, depending on the remote controller. In this case, do not click **Refresh** until all the remote controllers have finished rebooting. If the IP address or other setting is changed while rebooting, the setting will not be applied correctly even if **Apply** is clicked. Check that all have finished rebooting, and then click **Apply**.

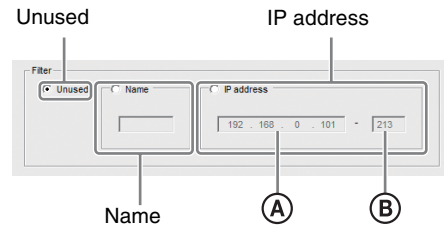
**8** Click **Refresh**.  
An updated list of the current settings is displayed.

**Note**

If more than one remote controller is connected, all the camera table information may be displayed blank after you switch the remote controller on the **Camera Table** screen and click **Refresh**. If this occurs, click **Refresh** again.

**To list only specified cameras for camera selection**

When using multiple cameras, you can list specified cameras only to select them more easily. Configure settings in **Filter** on the **Camera Table** screen.



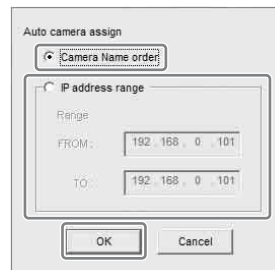
- When **Name** is selected, only camera names that include the characters you enter will be listed.
- When **IP address** is selected, only cameras that are within the specified range of the IP addresses (A to B) will be listed.
- All the cameras will be listed when **Unused** is marked.

**To assign camera groups and camera numbers to cameras automatically**

**1** Click **Auto assign** on the **Camera Table** screen. The **Auto camera assign** screen appears.

- 2** Do one of the following.
- To assign a camera group and camera number to all cameras specified on the **Camera List** screen, select **Camera Name order**.
  - To assign a camera group and camera number to cameras within a specified IP address range, select **IP address range** and specify an IP address range.

**3** Click **OK**.  
Camera groups and camera numbers are automatically assigned to the cameras.



**4** Click **Apply**.  
To cancel the setting, click **Cancel**.

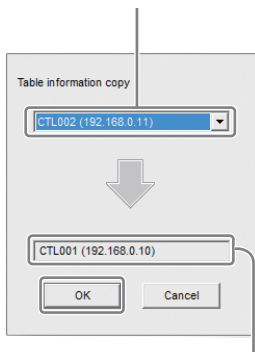


## To copy the camera table from another remote controller

You can copy an existing camera table, or part of an existing camera table, from another remote controller on the same network.

- 1 Select the destination remote controller, and mark the checkbox of the camera groups and camera numbers you want the copy to overwrite. To copy and overwrite the whole camera table, mark all checkboxes.
- 2 Click **Copy**.  
The **Table information copy** screen appears.
- 3 Select the copy source remote controller from the pull-down menu.
- 4 Click **OK**.

Copy source remote controller



Copy destination remote controller  
(selected remote controller)

The camera table is copied to the destination remote controller.

- 5 Click **Apply** to apply the settings.  
To cancel the setting, click **Cancel**.

### Note

The camera table of a remote controller that is connected to a different segment cannot be copied. See the **Export** and **Import** function in “Saving Settings” (page 10).

## To clear the camera group and camera number

Mark the checkbox of the camera group and camera number that you want to delete, then click **Clear**.

## To control a camera in a different segment

This software can only detect remote controllers and cameras in the same segment on a LAN network. Use

the following procedure to control a camera installed on the network of a different segment.

- 1 Temporarily connect the PC on which the software is installed and a remote controller to the same network as a camera in a different segment.
- 2 Add a camera to control to the camera table.
- 3 Reconnect the PC and remote controller to the network of the segment for actual use.
- 4 Change the remote controller network setting to point to the destination network segment.
- 5 Add other cameras in the same segment to the camera table of the remote controller, as required.

### Note

Cameras in a different segment are displayed in yellow in the camera table. Do not delete them.

## Precautions when copying a camera table between RM-IP500 and RM-IP10

The RM-IP500 supports ten groups, while the RM-IP10 supports 16 groups. Each group consists of ten cameras on the RM-IP500, and seven on the RM-IP10.

Accordingly, some of the camera groups and camera numbers are not copied, as shown in the following table, when copying a camera table between RM-IP500 and RM-IP10.

### When copying from RM-IP500 to RM-IP10

| RM-IP500 |                | RM-IP10          |                |
|----------|----------------|------------------|----------------|
| ID       | Group-No       | ID               | Group-No       |
| ID1      | Group1-1       | ID1              | Group1-1       |
| :        | :              | :                | :              |
| ID7      | Group1-7       | ID7              | Group1-7       |
| ID8      | Group1-8       | Cannot be copied |                |
| ID9      | Group1-9       | Cannot be copied |                |
| ID10     | Group1-10      | Cannot be copied |                |
| ID11     | Group2-1       | ID8              | Group2-1       |
| :        | :              | :                | :              |
| ID96     | Group10-6      | ID69             | Group10-6      |
| ID97     | Group10-7      | ID70             | Group10-7      |
| ID98     | Group10-8      | Cannot be copied |                |
| ID99     | Group10-9      | Cannot be copied |                |
| ID100    | Group10-10     | Cannot be copied |                |
| ID101    | Not applicable | Not applicable   | Not applicable |
| :        | :              | :                | :              |
| ID112    | Not applicable | Not applicable   | Not applicable |

### When copying from RM-IP10 to RM-IP500

| RM-IP10 |           | RM-IP500         |           |
|---------|-----------|------------------|-----------|
| ID      | Group-No  | ID               | Group-No  |
| ID1     | Group1-1  | ID1              | Group1-1  |
| :       | :         | :                | :         |
| ID7     | Group1-7  | ID7              | Group1-7  |
| ID8     | Group2-1  | ID11             | Group2-1  |
| :       | :         | :                | :         |
| ID69    | Group10-6 | ID96             | Group10-6 |
| ID70    | Group10-7 | ID97             | Group10-7 |
| ID71    | Group11-1 | Cannot be copied |           |
| :       | :         | :                | :         |
| ID112   | Group16-7 | Cannot be copied |           |

## Other Operations

### Saving Settings

You can save specified camera, remote controller, and camera table settings to separate CSV files.

- 1 Display the screen with the settings you want to save.
  - To save camera settings, display the **Camera List** screen.
  - To save remote controller settings, display the **Controller List** screen.
  - To save camera table settings, display the **Camera Table** screen.
- 2 Select **Export** from the **File** menu on the menu bar.
- 3 Click **Save** to select the save destination.

### Importing a Saved Camera Table

You can import a saved camera table into a remote controller.

- 1 Select **Import** from the **File** menu on the menu bar. The file selection dialog appears.
- 2 Select the file to import.
- 3 Mark the checkbox on the **Camera Table** screen of the import destination remote controller.
- 4 Click **Apply**.

#### Note

You cannot import **Camera List** and **Controller List** settings.

### Exiting the Software

Select **Exit** from the **File** menu on the menu bar to exit RM-IP Setup Tool and close the window.

### Deleting the Software

Delete "RM-IPSetupTool.exe" from the folder where it was saved.

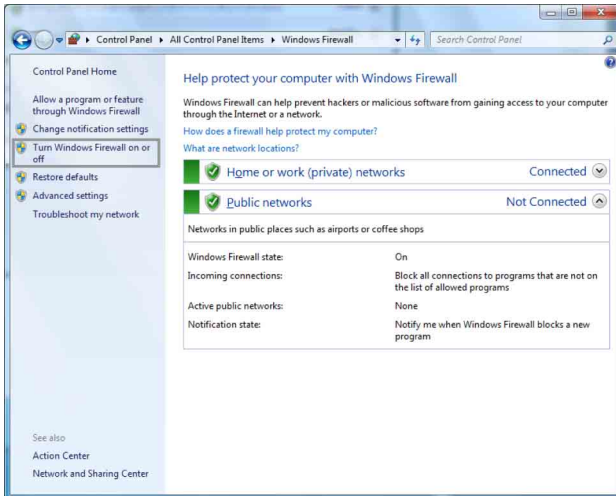
# Configuring Windows Firewall

RM-IP Setup Tool may not operate correctly (no cameras are shown in the list even if they are connected and configured correctly), depending on the configuration of Windows Firewall. In this case, check the Windows Firewall settings.

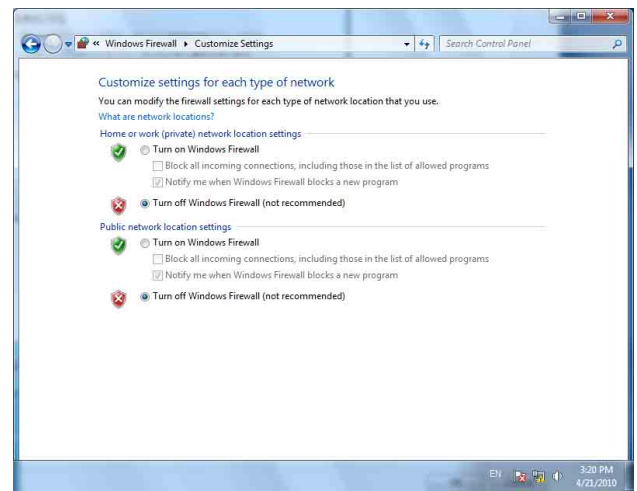
## When using Windows 7

### To turn Windows Firewall off

- 1 Select **Control Panel** from the **Start** menu of Windows, and select **System and Security**.
- 2 Click **Windows Firewall**.
- 3 Select **Turn Windows Firewall on or off**.

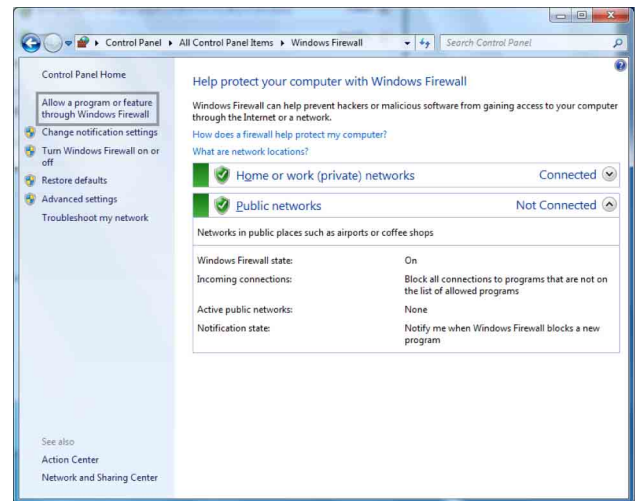


## 4 Select Turn off Windows Firewall.

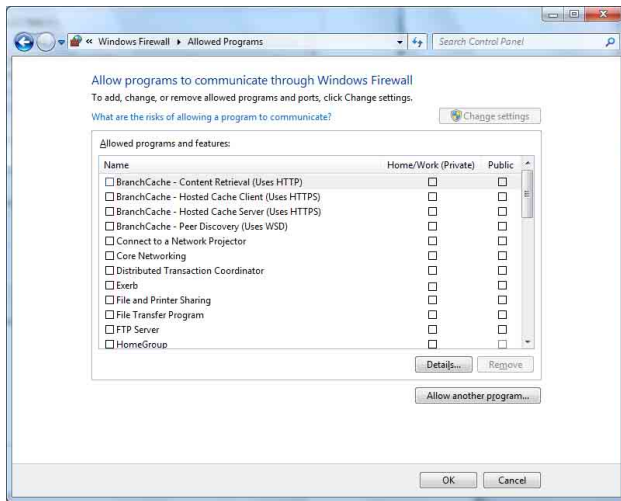


### To turn Windows Firewall on

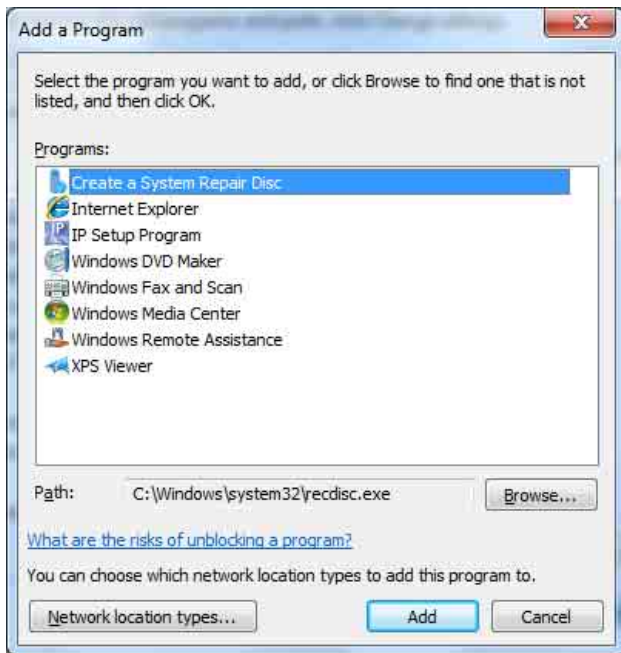
- 1 Select **Control Panel** from the **Start** menu of Windows, and select settings **System and Security**.
- 2 Click **Windows Firewall**.
- 3 Select **Allow a program or feature through Windows Firewall**.



#### 4 Select **Allow another program...**



- 5 Add the program.  
Click **Browse...** specify the path of RM-IP Setup Tool, then click **Add**.

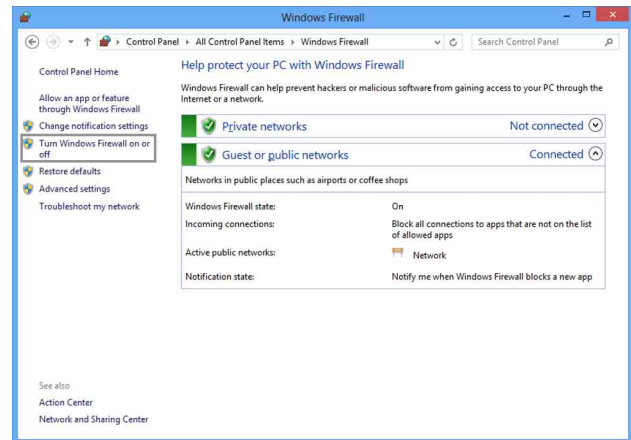


## When using Windows 8.1 or Windows 10

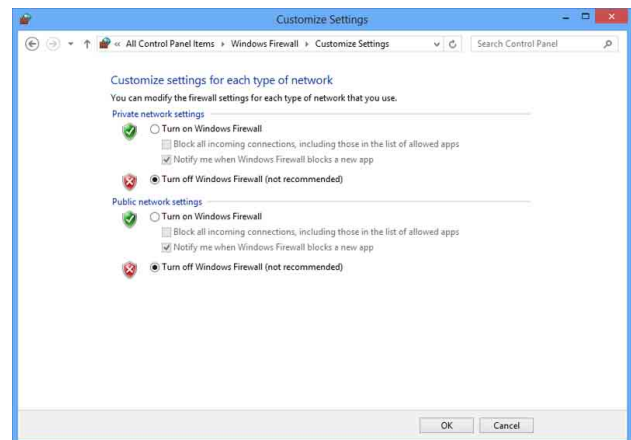
### To turn Windows Firewall off

- 1 Press and hold the Windows key and press the X key on the keyboard, then select **Control Panel** and **System and Security**.
- 2 Click **Windows Firewall**.

#### 3 Select **Turn Windows Firewall on or off**.

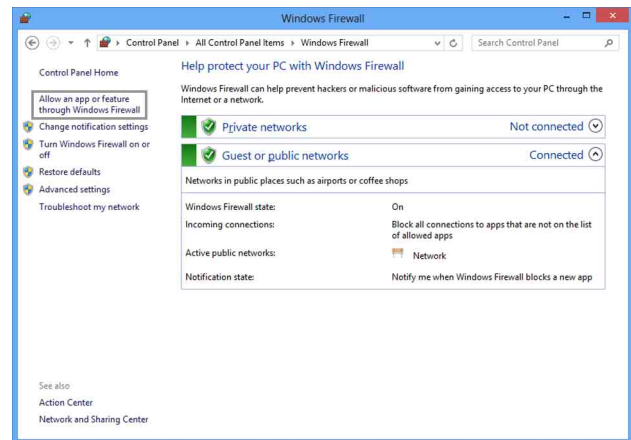


#### 4 Select **Turn off Windows Firewall**.

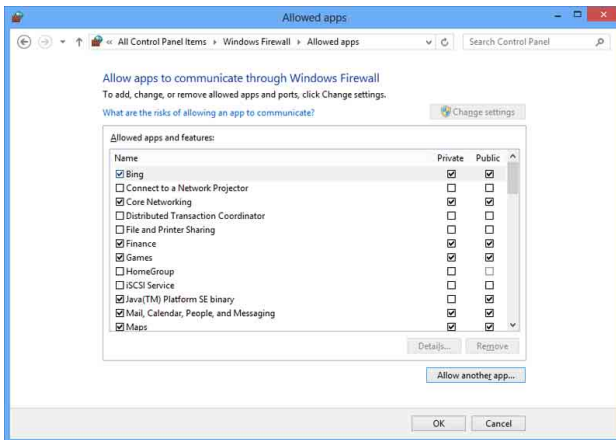


### To turn Windows Firewall on

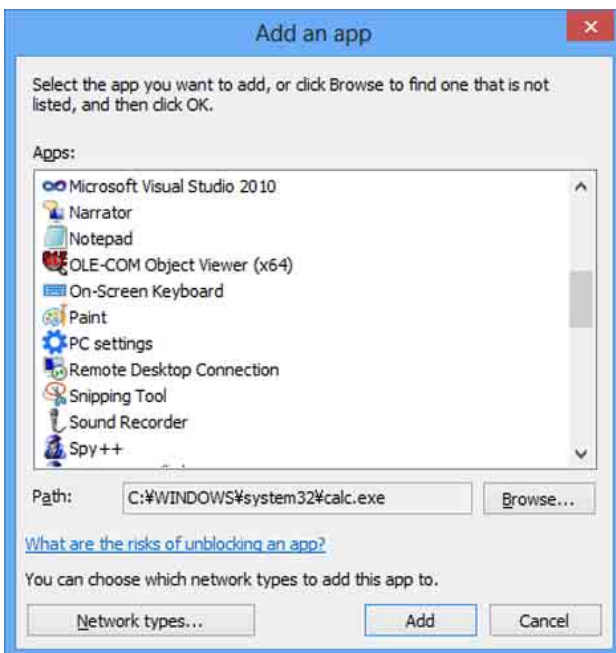
- 1 Press and hold the Windows key and press the X key on the keyboard, then select **Control Panel** and **System and Security**.
- 2 Click **Windows Firewall**.
- 3 Select **Allow an app or feature through Windows Firewall**.



## 4 Select **Allow another app...**



## 5 Add the application. Click **Browse...** specify the path of RM-IP Setup Tool, then click **Add**.



<http://www.sony.net/>

Sony Corporation