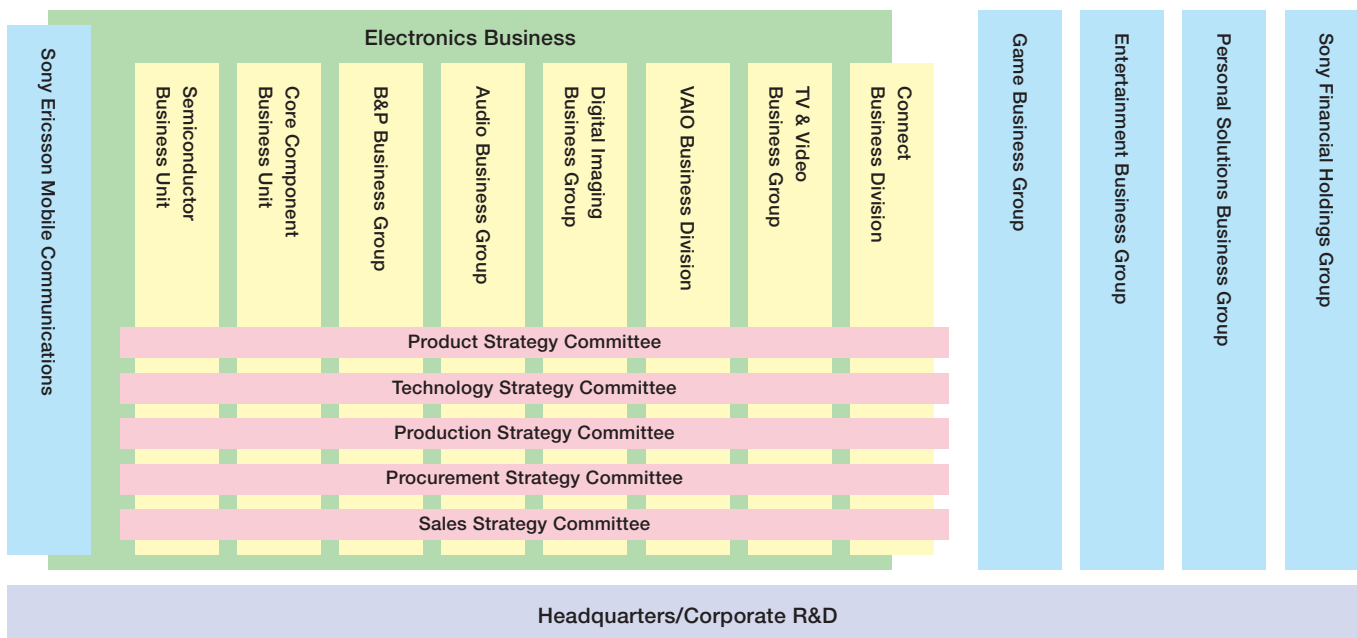


Sony Overview

Corporate Data

Headquarters	6-7-35, Kita-Shinagawa, Shinagawa-ku, Tokyo 141-0001, Japan
Established	May 7, 1946
Employees	158,500 (as of March 31, 2006)
Sales and operating revenue	¥7,475.4 billion (for the fiscal year that began on April 1, 2005 and ended on March 31, 2006; hereafter referred to in this report as “fiscal 2005”)

Sony Organization Chart (As of July 1, 2006)



Semiconductor Business Unit
Semiconductors and related products

Core Component Business Unit
Devices and modules

B&P Business Group
Business-to-business (B2B) solutions, centered on professional-use products and services

Audio Business Group
Audio-related products

Digital Imaging Business Group
Digital video cameras, digital cameras and other digital imaging products

VAIO Business Division
Personal computers and related products

TV & Video Business Group
Televisions, VCRs and related products

Connect Business Division
Digital content distribution and related businesses

Game Business Group
Games and related businesses

Entertainment Business Group
Entertainment businesses, centered on movies and music

Personal Solutions Business Group
Business-to-consumer (B2C) direct business solutions

Sony Financial Holdings Group
Leasing, credit, life insurance, non-life insurance and banking services

Sony Ericsson Mobile Communications
Mobile phones, next-generation multimedia mobile services

As part of its new mid-term corporate strategy, in September 2005 Sony significantly reorganized its electronics group to place centralized decision-making authority over key areas under the Electronics CEO. This change abolishes the company system and assures coordination and focus across newly defined business groups. Rigorous horizontal coordination in key areas—product planning, technology, procurement, manufacturing, and

sales and marketing—will allow rapid and streamlined decision making across product lines.

Sony will continue to leverage the resources of the Sony Group to deliver more appealing products and services as the world’s leading electronics and entertainment company.

Business at a Glance

Electronics

Business Areas

Audio, Video, Televisions, Information and Communications, Semiconductors, Components and Other categories



Game

Business Areas

Game console and software businesses



© Sony Computer Entertainment Inc. All rights reserved.

Pictures

Business Areas

Motion picture, television and other businesses



MEMOIRS OF A GEISHA © 2005 Columbia Pictures Industries, Inc., DreamWorks L.L.C. and Spyglass Entertainment Group, LLC. All rights reserved.

Financial Services

Business Areas

Life insurance, non-life insurance, banking, leasing and credit financing business



All Other

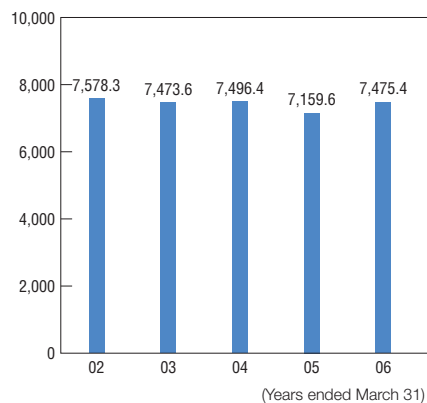
Business Areas

Music content, music publishing business, network service business, production and marketing of animation products, and other businesses

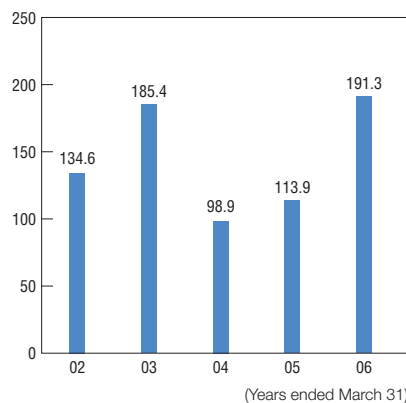


Financial Highlights (Billions of yen)

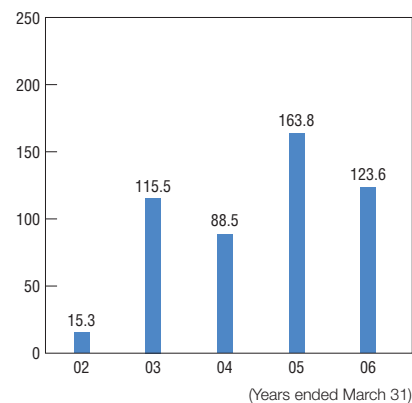
Sales and Operating Revenue



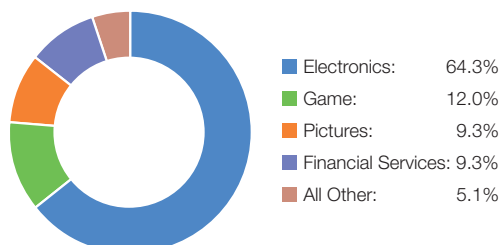
Operating Income



Net Income

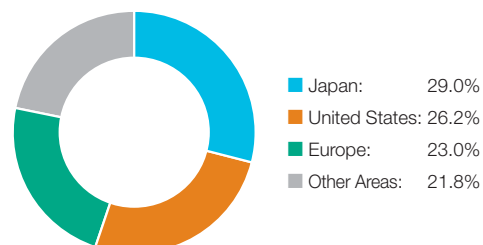


Sales and Operating Revenue by Business Segment*1



(Total sales and operating revenue: ¥7,475.4 billion)
(Year ended March 31, 2006)

Sales and Operating Revenue by Geographic Segment



(Total sales and operating revenue: ¥7,475.4 billion)
(Year ended March 31, 2006)

*1 Includes internal transactions

Directors and Corporate Executive Officers

Board of Directors		
Chairman of the Board: Yotaro Kobayashi* Vice Chairman of the Board: Hirobumi Kawano*		
Sir Howard Stringer	Sony Corporation Chairman and Chief Executive Officer	
Ryoji Chubachi	Sony Corporation President and Electronics CEO	
Katsumi Ihara	Sony Corporation Executive Deputy President, Officer in charge of Procurement Strategies and TV & Video Business	
Akishige Okada*	Advisor, Sumitomo Mitsui Banking Corporation	
Hirobumi Kawano*	Senior Vice President, JFE Steel Corporation	
Yotaro Kobayashi*	Chief Corporate Advisor, Fuji Xerox Co., Ltd.	
Sakie T. Fukushima*	Representative Director & Regional Managing Director–Japan, Korn/Ferry International Member of the Board, Korn/Ferry International, U.S.A.	
Yoshihiko Miyauchi*	Director, Representative Executive Officer, Chairman and Chief Executive Officer, ORIX Corporation	
Yoshiaki Yamauchi*	Director, Sumitomo Mitsui Financial Group, Inc.	
Sir Peter Bonfield*	Member of the Board, Telefonaktiebolaget LM Ericsson	
Fueo Sumita*	Chief of Sumita Accounting Office	
Fujio Cho*	Vice Chairman, Toyota Motor Corporation	
Ned Lautenbach*	Operating Partner, Clayton, Dubilier & Rice, Inc.	
Göran Lindahl	Chairman & CEO, LivSafe AB, Chairman & CEO, LivSafe, Inc., and Director, INGKA Holding B.V.	
Board Committees		
Nominating Committee	Audit Committee	Compensation Committee
Yotaro Kobayashi* (Chairman) Hirobumi Kawano* Sir Peter Bonfield* Sir Howard Stringer Ryoji Chubachi	Yoshiaki Yamauchi* (Chairman) Sakie T. Fukushima* Fueo Sumita*	Akishige Okada* (Chairman) Yoshihiko Miyauchi* Fujio Cho* Göran Lindahl

* An outside director who satisfies the requirements under Item 15, Article 2 of the Japanese Company Law

Corporate Executive Officers	
Sir Howard Stringer**	Chairman and Chief Executive Officer
Ryoji Chubachi**	President and Electronics CEO
Katsumi Ihara**	Executive Deputy President, Officer in charge of Procurement Strategies and TV & Video Business
Nobuyuki Oneda	Executive Vice President and Chief Financial Officer
Keiji Kimura	Executive Vice President, Officer in charge of Technology Strategies and Intellectual Property
Nicole Seligman	Executive Vice President and General Counsel
Yutaka Nakagawa	Executive Vice President, Officer in charge of Products Strategies, Digital Imaging Business and Audio Business

** Representative Corporate Executive Officer concurrently serving as Director

(Names and positions of new Directors and Corporate Executive Officers as of June 22, 2006)