

CXM3570ER

Description

The CXM3570ER is a DP8T antenna switch module for GSM/UMTS/CDMA multi-mode handset. This IC has a built-in dual low pass filter and a +1.8 V CMOS compatible decoder. The Sony JPHEMT MMIC process is used for low insertion loss and high linearity. The device has low BOM with no DC blocking capacitor.
(Application: GSM/UMTS/CDMA multi-mode handset)

Features

- ◆ Low insertion loss: 0.52 dB (Typ.) TRx (Cellular band)
 0.72 dB (Typ.) TRx (IMT Tx band)
- ◆ Low-voltage operation: V_{DD} = 2.5 V
- ◆ No DC blocking capacitor
- ◆ Small packing (size): VQFN-26P (3.0 mm × 3.8 mm × 0.85 mm Max.)
- ◆ Lead-free and RoHS compliant

Structure

- ◆ GaAs JPHEMT MMIC switch, CMOS decoder

This IC is ESD sensitive device. Special handling precautions are required.

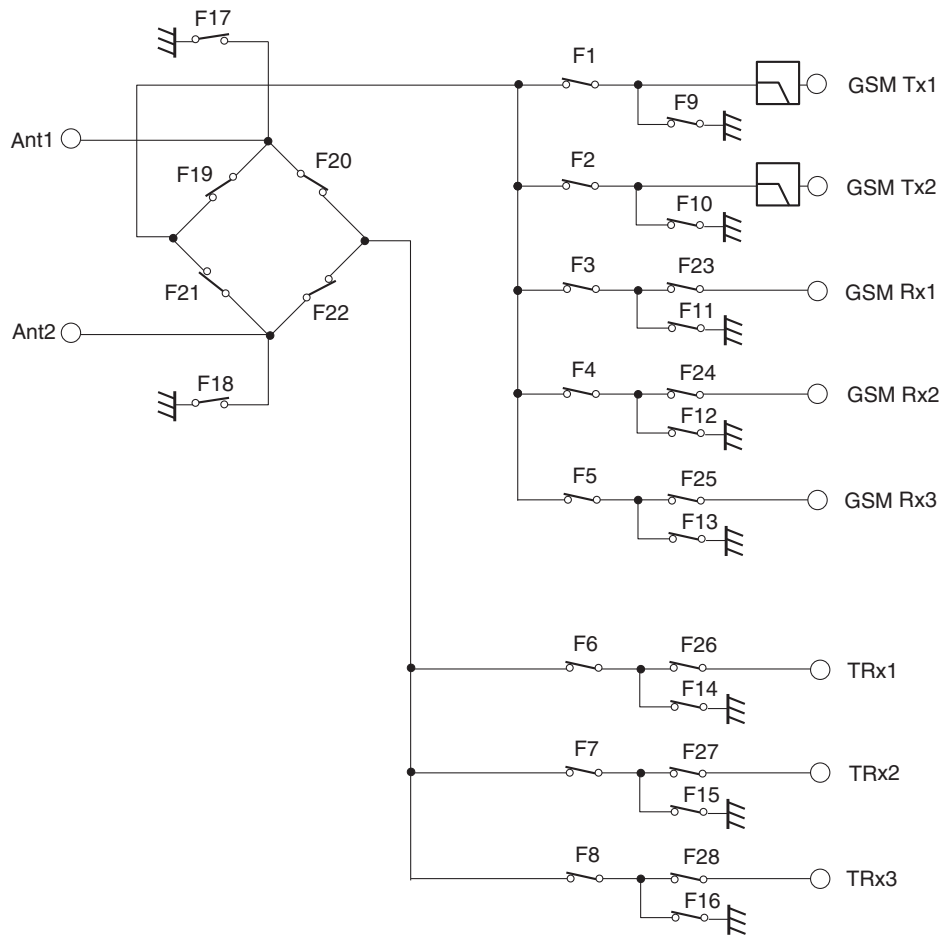
Sony reserves the right to change products and specifications without prior notice. This information does not convey any license by any implication or otherwise under any patents or other right. Application circuits shown, if any, are typical examples illustrating the operation of the devices. Sony cannot assume responsibility for any problems arising out of the use of these circuits.

**Absolute Maximum Ratings**

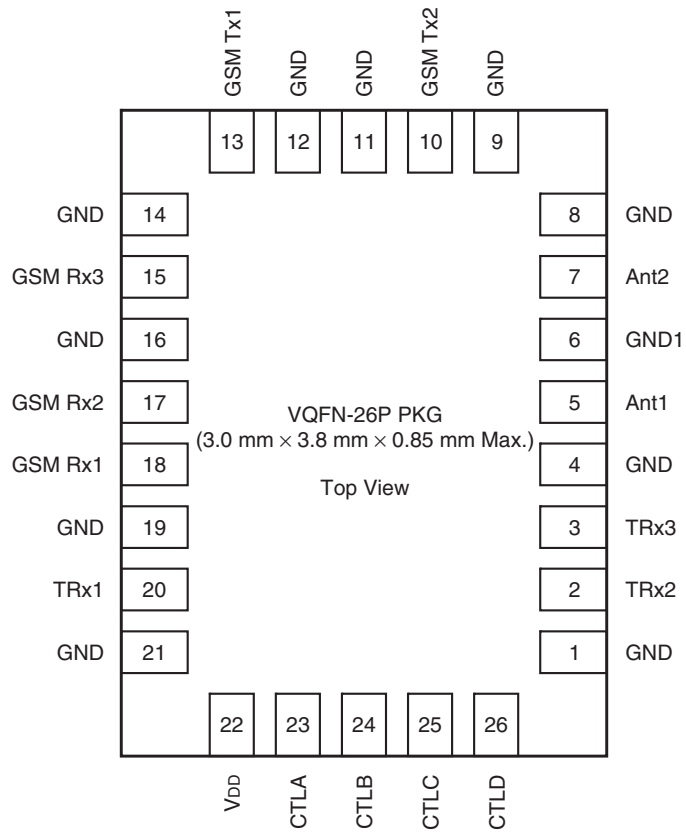
(Ta = 25 °C)

Bias voltage	V _{DD}	4	V
Control voltage	V _{ctl}	4	V
Input power max. (Tx1)		36	dBm (Duty cycle = 12.5 % to 50 %)
Input power max. (Tx2)		34	dBm (Duty cycle = 12.5 % to 50 %)
Input power max. (TRx1, 2, 3)		32	dBm
Input power max. (Rx1, 2, 3)		13	dBm
Operating temperature range		-20 to +90	°C
Storage temperature range		-65 to +150	°C

Block Diagram



Pin Configuration



Truth Table

State	CTL A	CTL B	CTL C	CTL D	Active Port	Active Ant	F1	F2	F3	F4	F5	F6	F7	F8	F9	F10	F11	F12	F13	F14	F15	F16	F17	F18
1	L	H	L	H	TRx1	ANT1	OFF	OFF	OFF	OFF	OFF	ON	OFF	OFF	ON	ON	ON	ON	ON	OFF	ON	ON	OFF	ON
2	H	H	L	H	TRx2	ANT1	OFF	OFF	OFF	OFF	OFF	OFF	ON	OFF	ON	ON	ON	ON	ON	ON	OFF	ON	OFF	ON
3	L	H	H	H	TRx3	ANT1	OFF	OFF	OFF	OFF	OFF	OFF	OFF	ON	ON	ON	ON	ON	ON	ON	ON	OFF	OFF	ON
4	L	L	H	H	GSM Rx1	ANT1	OFF	OFF	ON	OFF	OFF	OFF	OFF	OFF	ON	ON	OFF	ON	ON	ON	ON	ON	OFF	ON
5	H	L	H	H	GSM Rx2	ANT1	OFF	OFF	OFF	ON	OFF	OFF	OFF	OFF	ON	ON	ON	OFF	ON	ON	ON	ON	OFF	ON
6	H	H	H	H	GSM Rx3	ANT1	OFF	OFF	OFF	OFF	ON	OFF	OFF	OFF	ON	ON	ON	ON	OFF	ON	ON	ON	OFF	ON
7	H	L	L	H	GSM Tx1	ANT1	ON	OFF	OFF	OFF	OFF	OFF	OFF	OFF	OFF	ON	ON	ON	ON	ON	ON	ON	OFF	ON
8	L	L	L	H	GSM Tx2	ANT1	OFF	ON	OFF	OFF	OFF	OFF	OFF	OFF	ON	OFF	ON	ON	ON	ON	ON	ON	OFF	ON
9	L	H	L	L	TRx1	ANT2	OFF	OFF	OFF	OFF	OFF	ON	OFF	OFF	ON	ON	ON	ON	ON	OFF	ON	ON	ON	OFF
10	H	H	L	L	TRx2	ANT2	OFF	OFF	OFF	OFF	OFF	OFF	ON	OFF	ON	ON	ON	ON	ON	ON	OFF	ON	ON	OFF
11	L	H	H	L	TRx3	ANT2	OFF	OFF	OFF	OFF	OFF	OFF	OFF	ON	ON	ON	ON	ON	ON	ON	ON	OFF	ON	OFF
12	L	L	H	L	GSM Rx1	ANT2	OFF	OFF	ON	OFF	OFF	OFF	OFF	OFF	ON	ON	OFF	ON	ON	ON	ON	ON	ON	OFF
13	H	L	H	L	GSM Rx2	ANT2	OFF	OFF	OFF	ON	OFF	OFF	OFF	OFF	ON	ON	ON	OFF	ON	ON	ON	ON	ON	OFF
14	H	H	H	L	GSM Rx3	ANT2	OFF	OFF	OFF	OFF	ON	OFF	OFF	OFF	ON	ON	ON	ON	OFF	ON	ON	ON	ON	OFF
15	H	L	L	L	GSM Tx1	ANT2	ON	OFF	OFF	OFF	OFF	OFF	OFF	OFF	OFF	ON	ON	ON	ON	ON	ON	ON	ON	OFF
16	L	L	L	L	GSM Tx2	ANT2	OFF	ON	OFF	OFF	OFF	OFF	OFF	OFF	ON	OFF	ON	ON	ON	ON	ON	ON	ON	OFF

State	CTL A	CTL B	CTL C	CTL D	Active Port	Active Ant	F19	F20	F21	F22	F23	F24	F25	F26	F27	F28
1	L	H	L	H	TRx1	ANT1	OFF	ON	OFF	OFF	OFF	OFF	OFF	ON	OFF	OFF
2	H	H	L	H	TRx2	ANT1	OFF	ON	OFF	OFF	OFF	OFF	OFF	OFF	ON	OFF
3	L	H	H	H	TRx3	ANT1	OFF	ON	OFF	OFF	OFF	OFF	OFF	OFF	OFF	ON
4	L	L	H	H	GSM Rx1	ANT1	ON	OFF	OFF	OFF	ON	OFF	OFF	OFF	OFF	OFF
5	H	L	H	H	GSM Rx2	ANT1	ON	OFF	OFF	OFF	OFF	ON	OFF	OFF	OFF	OFF
6	H	H	H	H	GSM Rx3	ANT1	ON	OFF	OFF	OFF	OFF	OFF	ON	OFF	OFF	OFF
7	H	L	L	H	GSM Tx1	ANT1	ON	OFF	OFF	OFF	OFF	OFF	OFF	OFF	OFF	OFF
8	L	L	L	H	GSM Tx2	ANT1	ON	OFF	OFF	OFF	OFF	OFF	OFF	OFF	OFF	OFF
9	L	H	L	L	TRx1	ANT2	OFF	OFF	OFF	ON	OFF	OFF	OFF	ON	OFF	OFF
10	H	H	L	L	TRx2	ANT2	OFF	OFF	OFF	ON	OFF	OFF	OFF	OFF	ON	OFF
11	L	H	H	L	TRx3	ANT2	OFF	OFF	OFF	ON	OFF	OFF	OFF	OFF	OFF	ON
12	L	L	H	L	GSM Rx1	ANT2	OFF	OFF	ON	OFF	ON	OFF	OFF	OFF	OFF	OFF
13	H	L	H	L	GSM Rx2	ANT2	OFF	OFF	ON	OFF	OFF	ON	OFF	OFF	OFF	OFF
14	H	H	H	L	GSM Rx3	ANT2	OFF	OFF	ON	OFF	OFF	OFF	ON	OFF	OFF	OFF
15	H	L	L	L	GSM Tx1	ANT2	OFF	OFF	ON	OFF	OFF	OFF	OFF	OFF	OFF	OFF
16	L	L	L	L	GSM Tx2	ANT2	OFF	OFF	ON	OFF	OFF	OFF	OFF	OFF	OFF	OFF

**DC Bias Conditions**

(Ta = 25 °C)

Item	Min.	Typ.	Max.	Unit
V _{DD}	2.5	2.8	3.3	V
V _{ctl} (H)	1.35	1.8	3.3	V
V _{ctl} (L)	0	—	0.45	V

Electrical Characteristics

(Ta = 25 °C)

Item	Symbol	Condition	Min.	Typ.	Max.	Unit
Switching speed	Tsw		—	3	5	μs
Startup time	Tst	V _{DD} = 0 to 2.8 V	—	6	50	μs
Control current	I _{ctl}	V _{ctl} = 1.8 V per line	—	0.01	1	μA
Supply current	I _{DD}	V _{DD} = 2.8 V	—	240	500	μA

Item	Symbol	Path	Condition	Ant1 Active			Ant2 Active			Unit
				Min.	Typ.	Max.	Min.	Typ.	Max.	
Insertion loss	IL	Ant1/Ant2 – Tx1	*1	—	1.30	1.45	—	1.32	1.47	dB
		Ant1/Ant2 – Tx2	*2	—	1.15	1.30	—	1.16	1.31	dB
		Ant1/Ant2 – Rx1/2/3	*3	—	0.90	1.05	—	0.90	1.05	dB
		Ant1/Ant2 – Rx1/2/3	*4	—	1.15	1.30	—	1.11	1.26	dB
		Ant1/Ant2 – TRx1/2/3	*5	—	0.52	0.67	—	0.52	0.67	dB
		Ant1/Ant2 – TRx1/2	*6	—	0.68	0.83	—	0.67	0.82	dB
		Ant1/Ant2 – TRx3	*6	—	0.77	0.92	—	0.73	0.88	dB
		Ant1/Ant2 – TRx1/2	*7	—	0.75	0.90	—	0.72	0.87	dB
		Ant1/Ant2 – TRx3	*7	—	0.86	1.01	—	0.80	0.95	dB
VSWR	VSWR	All ports in Active paths	824 to 2170 MHz	—	1.3	—	—	1.3	—	—
Rx in-band spurious	SPR	Ant1/Ant2 – Rx1, 2, 3	*3, *4	—	—	-125	—	—	-125	dBm
Attenuation	ATT	Tx1 – Ant/Ent	1648 to 1830 MHz	25	30	—	25	30	—	dB
			2472 to 2745 MHz	25	31	—	25	30	—	dB
			3296 to 12750 MHz	20	30	—	20	33	—	dB
		Tx2 – Ant/Ent	3420 to 3820 MHz	25	30	—	25	28	—	dB
			5130 to 5730 MHz	25	40	—	25	28	—	dB
			6840 to 7000 MHz	15	21	—	15	21	—	dB
			7000 to 12750 MHz	20	23	—	20	27	—	dB

Electrical characteristics are measured with all RF ports terminated in 50 Ω.

- *1 Pin on Tx1: 35 dBm, 824 to 915 MHz, V_{DD} = 2.8 V, Tx1 enable
- *2 Pin on Tx2: 32 dBm, 1710 to 1910 MHz, V_{DD} = 2.8 V, Tx2 enable
- *3 Pin on Ant: 10 dBm, 869 to 960 MHz, V_{DD} = 2.8 V, Rx1 or Rx2 or Rx3 enable
- *4 Pin on Ant: 10 dBm, 1805 to 1990 MHz, V_{DD} = 2.8 V, Rx1 or Rx2 or Rx3 enable
- *5 Pin on TRx1 or TRx2 or TRx3: 26 dBm, 824 to 894 MHz, V_{DD} = 2.8 V, TRx1 or TRx2 or TRx3 enable
- *6 Pin on TRx1 or TRx2 or TRx3: 26 dBm, 1750 to 1880 MHz, V_{DD} = 2.8 V, TRx1 or TRx2 or TRx3 enable
- *7 Pin on TRx1 or TRx2 or TRx3: 26 dBm, 1920 to 2170 MHz, V_{DD} = 2.8 V, TRx1 or TRx2 or TRx3 enable

Item	Symbol	Path	Condition	Min.	Typ.	Max.	Unit
Isolation	ISO1	Tx1 - Rx1, 2	Tx1 - Ant1/Ant2 Active Freq. = Tx1_Band	30	53	—	dB
		Tx1 - Rx3	Tx1 - Ant1/Ant2 Active Freq. = Tx1_Band	30	45	—	dB
		Tx1 - TRx1, 2, 3	Tx1 - Ant1/Ant2 Active Freq. = Tx1_Band	30	50	—	dB
		Tx2 - Rx1, 2, 3	Tx2 - Ant1/Ant2 Active Freq. = Tx2_Band	30	55	—	dB
		Tx2 - TRx1, 2	Tx2 - Ant1/Ant2 Active Freq. = Tx2_Band	30	50	—	dB
		Tx2 - TRx3	Tx2 - Ant1/Ant2 Active Freq. = Tx2_Band	30	42	—	dB
	ISO2	TRx1 - TRx2	TRx1/2/3 Active Freq. = TRx_Band	30	44	—	dB
		TRx1 - TRx3	TRx1/2/3 Active Freq. = TRx_Band	30	45	—	dB
		TRx2 - TRx3	TRx1/2/3 Active Freq. = TRx_Band	21	26	—	dB
	ISO3	Tx1- Ant1/Ant2	Rx1/2/3 Active Freq. = Tx1_Band	25	35	—	dB
		Tx2- Ant1/Ant2	Rx1/2/3 Active Freq. = Tx2_Band	21	27	—	dB
	ISO4	Tx1 - Tx2	Tx1 Active Freq. = Tx1_Band	17	21	—	dB
			Tx2 Active Freq. = Tx2_Band	20	27	—	dB

Item	Symbol	Path	Condition	Ant1 Active			Ant2 Active			Unit
				Min.	Typ.	Max.	Min.	Typ.	Max.	
Harmonics	2fo	Tx1 –Ant1/Ant2	*1	—	-45	-36	—	-43	-36	dBm
	3fo			—	-50	-36	—	-50	-36	dBm
	2fo	Tx2 –Ant1/Ant2	*2	—	-58	-39	—	-52	-39	dBm
	3fo			—	-52	-39	—	-53	-39	dBm
	2fo	TRx1 –Ant1/Ant2	*3	—	-65	-39	—	-65	-39	dBm
	3fo			—	-65	-39	—	-65	-39	dBm
	2fo	TRx2 –Ant1/Ant2	*4	—	-65	-39	—	-65	-39	dBm
	3fo			—	-65	-39	—	-65	-39	dBm
	2fo	TRx3 –Ant1/Ant2	*5	—	-65	-39	—	-65	-39	dBm
	3fo			—	-65	-39	—	-65	-39	dBm
ACLR***	±5 MHz	TRx1–Ant1/Ant2	*3	—	—	-50	—	—	-50	dBc
	±10 MHz			—	—	-55	—	—	-55	dBc
	±5 MHz	Rx2–Ant1/Ant2	*4	—	—	-50	—	—	-50	dBc
	±10 MHz			—	—	-55	—	—	-55	dBc
	±5 MHz	Rx3–Ant1/Ant2	*5	—	—	-50	—	—	-50	dBc
	±10 MHz			—	—	-55	—	—	-55	dBc

Electrical characteristics are measured with all RF ports terminated in 50 Ω.

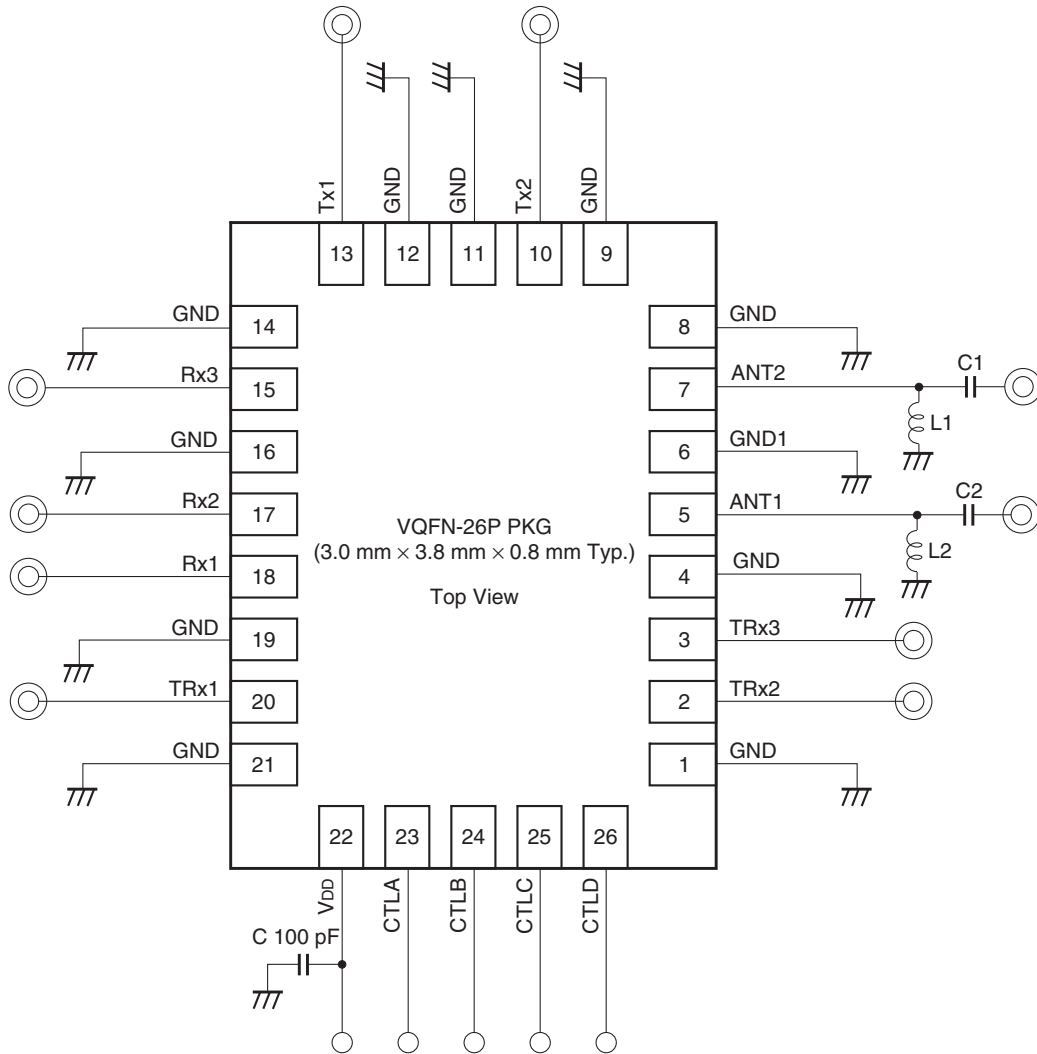
- *1 Pin on Tx1: 35 dBm, 824 to 915 MHz, V_{DD} = 2.8 V, Tx1 enable
- *2 Pin on Tx2: 32 dBm, 1710 to 1910 MHz, V_{DD} = 2.8 V, Tx2 enable
- *3 Pin on TRx1 or TRx2 or TRx3: 26 dBm, 824 to 894 MHz, V_{DD} = 2.8 V, TRx1 or TRx2 or TRx3 enable
- *4 Pin on TRx1 or TRx2 or TRx3: 26 dBm, 1750 to 1880 MHz, V_{DD} = 2.8 V, TRx1 or TRx2 or TRx3 enable
- *5 Pin on TRx1 or TRx2 or TRx3: 26 dBm, 1920 to 2170 MHz, V_{DD} = 2.8 V, Rx1 or TRx2 or TRx3 enable

Item	Symbol	Path	Condition	Ant1 Active			Ant2 Active			Unit
				Min.	Typ.	Max.	Min.	Typ.	Max.	
Intermodulation distortion	IMD2	TRx1 –Ant1/Ant2	*1, *13	—	-125	-110	—	-125	-110	dBm
			*2, *13	—	-123	-110	—	-126	-110	dBm
		TRx2 –Ant1/Ant2	*3, *13	—	-115	-105	—	-115	-105	dBm
			*4, *13	—	-110	-105	—	-111	-105	dBm
		TRx3 –Ant1/Ant2	*5, *13	—	-113	-105	—	-110	-105	dBm
			*6, *13	—	-111	-105	—	-116	-105	dBm
	IMD3	TRx1 –Ant1/Ant2	*7, *13	—	-112	-105	—	-112	-105	dBm
			*8, *13	—	-113	-105	—	-114	-105	dBm
		TRx2 –Ant1/Ant2	*9, *13	—	-108	-103	—	-108	-103	dBm
			*10, *13	—	-110	-105	—	-110	-105	dBm
		TRx3 –Ant1/Ant2	*11, *13	—	-108	-103	—	-110	-105	dBm
			*12, *13	—	-110	-105	—	-112	-105	dBm

Electrical characteristics are measured with all RF ports terminated in 50 Ω.

- *1 TRx port: +21.5 dBm, 835 MHz Ant port: -15 dBm, 45 MHz, V_{DD} = 2.8 V
- *2 TRx port: +21.5 dBm, 835 MHz Ant port: -15 dBm, 1715 MHz, V_{DD} = 2.8 V
- *3 TRx port: +21.5 dBm, 1765 MHz Ant port: -15 dBm, 95 MHz, V_{DD} = 2.8 V
- *4 TRx port: +21.5 dBm, 1765 MHz Ant port: -15 dBm, 3625 MHz, V_{DD} = 2.8 V
- *5 TRx port: +21.5 dBm, 1950 MHz Ant port: -15 dBm, 190 MHz, V_{DD} = 2.8 V
- *6 TRx port: +21.5 dBm, 1950 MHz Ant port: -15 dBm, 4090 MHz, V_{DD} = 2.8 V
- *7 TRx port: +21.5 dBm, 835 MHz Ant port: -15 dBm, 790 MHz, V_{DD} = 2.8 V
- *8 TRx port: +21.5 dBm, 835 MHz Ant port: -15 dBm, 2550 MHz, V_{DD} = 2.8 V
- *9 TRx port: +21.5 dBm, 1765 MHz Ant port: -15 dBm, 1670 MHz, V_{DD} = 2.8 V
- *10 TRx port: +21.5 dBm, 1765 MHz Ant port: -15 dBm, 5390 MHz, V_{DD} = 2.8 V
- *11 TRx port: +21.5 dBm, 1950 MHz Ant port: -15 dBm, 1760 MHz, V_{DD} = 2.8 V
- *12 TRx port: +21.5 dBm, 1950 MHz Ant port: -15 dBm, 6040 MHz, V_{DD} = 2.8 V
- *13 Measured with the recommended circuit

Recommended Circuit



* L1 = 22 nH, C1 = 12 pF, L2 = 22 nH, C2 = 12 pF

- Note) 1. No DC block capacitors are required on each RF port.
 2. DC levels of all RF ports are GND.
 3. L1/L2 inductor and C1/C2 capacitor are recommended on Ant port for IMD2 and ESD protection.

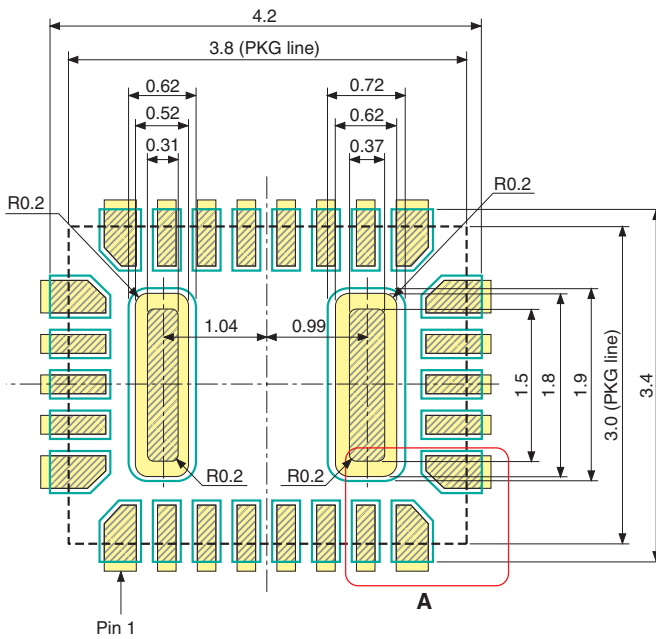
PCB Layout Template

Recommended land pattern

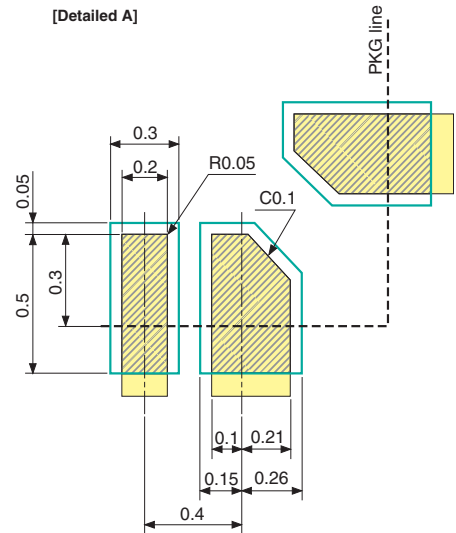
- Package size: 3.8 mm × 3.0 mm
- Pin pitch: 0.4 mm

- : Land
- ▨ : Mask (Open area)
- : Resist (Open area)

* Metal mask thickness: 110 μm



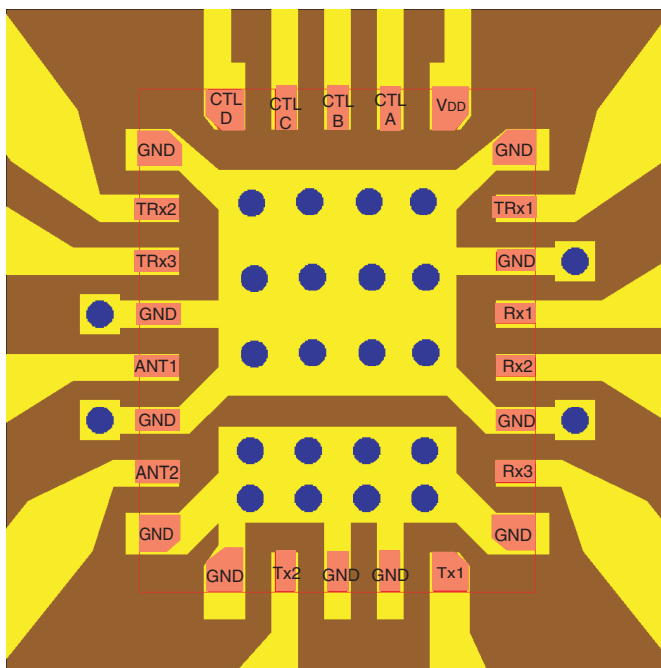
[Detailed A]



* Mask corner R = 0.05 mm

(Unit: mm)

Recommended PCB Design



- GND via hole
- VQFN-26P Package
- Pin

