

Camera Direct Print

Setting Guide

This guide describes how to print directly from WiFi-equipped digital cameras using the UP-CR20L and SX-WSG1.

SnapLab

UP-CR20L

Table of Contents

Copyright Notice	3
Overview	3
Major Features	3
Digital Camera Compatibility	3
Preparation	4
Operating Environment	4
Connection Modes	5
Setup Procedure	5
Setting AdHoc Mode	6
Setting Infrastructure Mode	9
Basic Operations	11
Image Transfer and Printing	11
Customized Border Printing	11
Selecting the Print Finish	12
Watermarking Order Numbers or File Names on Prints	12
Saving Transferred Image Files	13
Deleting Image Files from the Save Folder ...	14
Printing from the Save Folder	14

Copyright Notice

©2008 Sony Corporation. All rights reserved. This manual may not be reproduced, translated or reduced to any machine readable form in whole or in part, without prior written approval from Sony Corporation.

SONY CORPORATION PROVIDES NO WARRANTY WITH REGARD TO THIS MANUAL OR INFORMATION CONTAINED HEREIN AND HEREBY EXPRESSLY DISCLAIMS ANY IMPLIED WARRANTIES OF MERCHANTABILITY OR FITNESS FOR ANY PARTICULAR PURPOSE WITH REGARD TO THIS MANUAL OR SUCH INFORMATION. IN NO EVENT SHALL SONY CORPORATION BE LIABLE FOR ANY INCIDENTAL, CONSEQUENTIAL OR SPECIAL DAMAGES, WHETHER BASED ON TORT, CONTRACT, OR OTHERWISE, ARISING OUT OF OR IN CONNECTION WITH THIS MANUAL OR INFORMATION CONTAINED HEREIN OR THE USE THEREOF.

Sony Corporation reserves the right to make any modification to this manual or the information contained herein at any time without notice.

Trademarks

Microsoft and Windows are registered trademarks of Microsoft Corporation in the United States and/or other countries.

All other brands and product names are trademarks or registered trademarks of their respective owners.

Overview

You can print directly from WiFi-equipped digital cameras by connecting the SX-WSG1 WiFi adapter to the UP-CR20L.

Major Features

Camera direct transfer function

Image files can be transferred and printed directly from digital cameras equipped with IEEE 802.11b/g WiFi and FTP capabilities.

Versatile printing features

- In addition to regular photo printing, you can print with frame borders and select matte or glossy finish photo paper.
- Order numbers and file names can be printed as watermarks for easy print sorting.

Photo reprinting with the UP-CR20L

Reprint photos from image files transferred to the UP-CR20L.

Note

An expansion CompactFlash card is required for temporary storage of transferred files and when using the photo reprint function.

We recommend using a CompactFlash card with plenty of free capacity and a fast transfer speed.

Digital Camera Compatibility

Direct printing requires that the digital camera have the following capabilities:

- Wired or wireless LAN capability
- FTP (file transfer protocol) capability
The digital camera must allow you to freely set an FTP server as the file upload destination. Digital cameras with preset and non-settable upload destinations cannot be used.
- JPEG format image file transfer capability
Image files in formats other than JPEG cannot be printed.

Refer to the SnapLab support page for the current list of known-compatible digital cameras.

<http://www.sony.net/snaplab> (<http://www.sony.co.jp/snaplab>)

Preparation

Operating Environment

The following are required to configure the SX-WSG1:

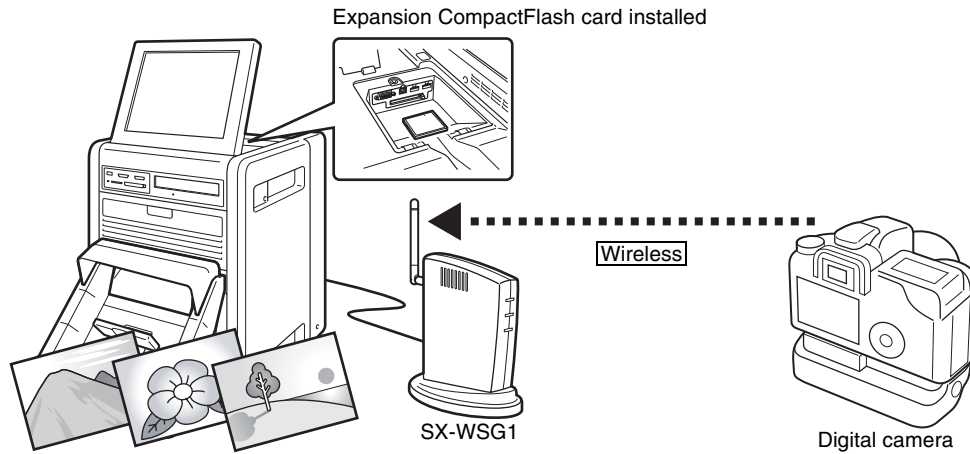
- Computer (IBM PC/AT compatible)
 - Operating system : Microsoft Windows XP or Vista
 - Display monitor (recommended) : at least XGA (1024 × 768 pixels) and 24-bit color
- USB memory
- USB cable (commercially available)

See also the SX-WSG1 Setup Guide.

Connection Modes

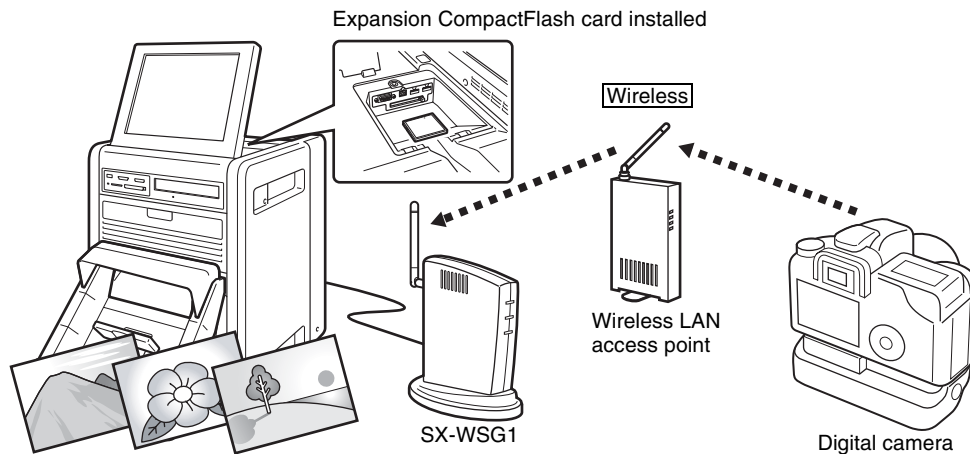
AdHoc Mode

Use this wireless LAN mode to connect the digital camera to the wireless adapter when there is no wireless LAN access point nearby.



Infrastructure Mode

Use this wireless LAN mode to connect the digital camera to the wireless adapter when a wireless LAN access point is nearby.



Setup Procedure

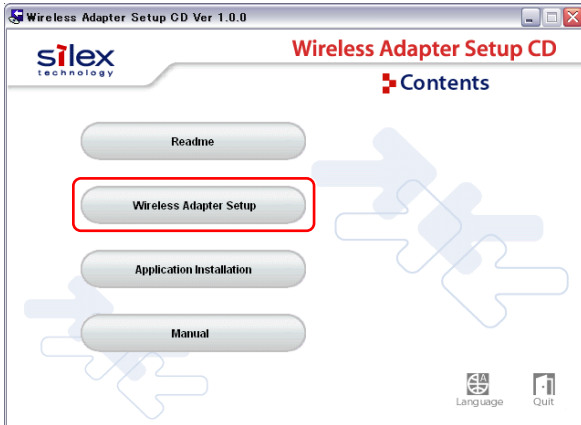
- 1** Set up the SX-WSG1.
- 2** Connect the SX-WSG1 to the UP-CR20L using a USB cable.
Connect the ends of the USB cable to the appropriate device based on the shape of the connectors.
- 3** Set up the digital camera.

Setting AdHoc Mode

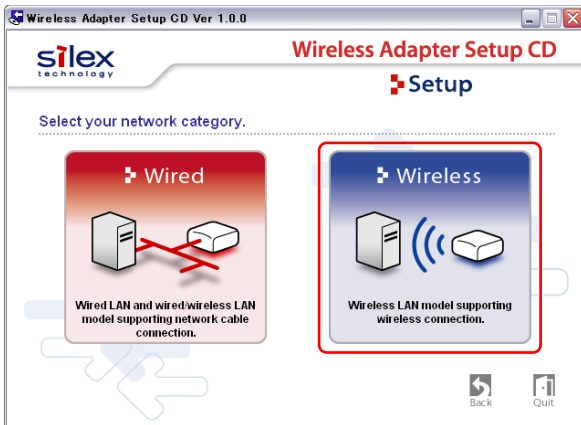
SX-WSG1 Setup

This manual describes the setup procedure for using USB memory. For details on other setup procedures, refer to the operating instructions supplied with the SX-WSG1.

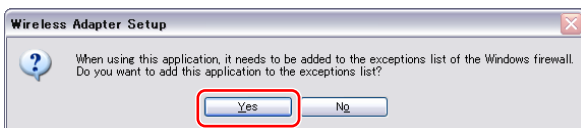
1 Start the Wireless Adapter Setup CD supplied with the SX-WSG1.



2 Click [Wireless Adapter Setup].



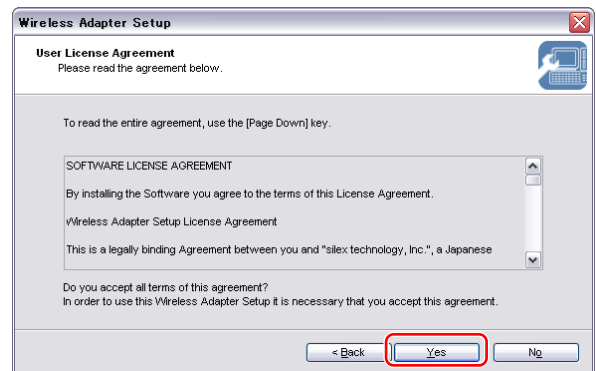
3 Click [Wireless].



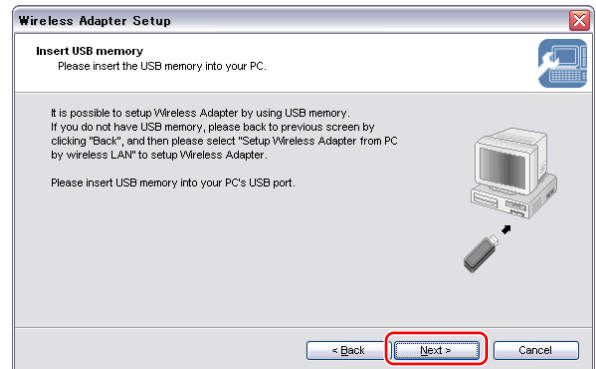
4 Click [Yes].



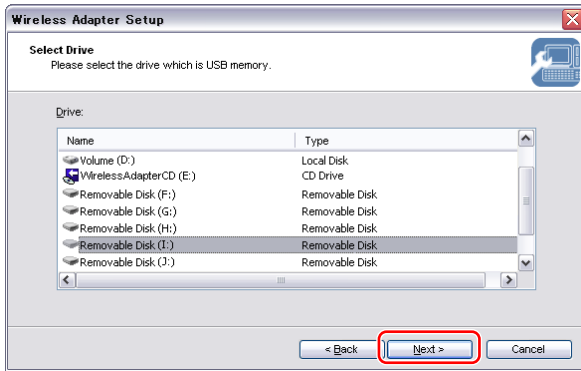
5 Select [Setup Wireless Adapter by USB memory], and click [Next].



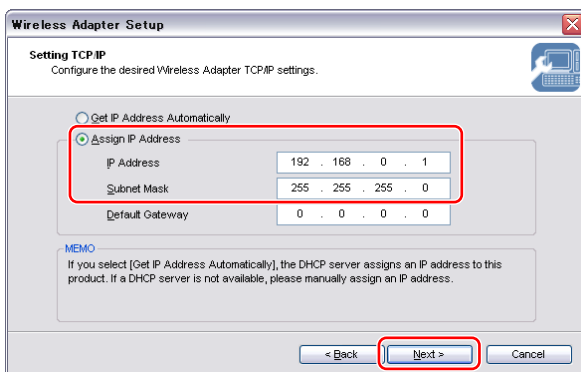
6 Read the license agreement, and click [Yes] to accept.



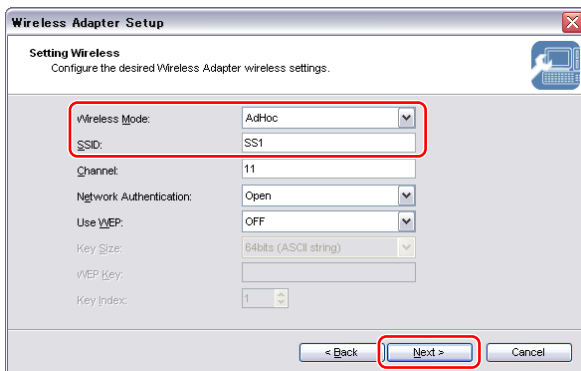
- 7 Follow the on-screen instructions to insert the USB memory in the computer, and click [Next].



- 8 Select the drive name of the USB memory, and click [Next].



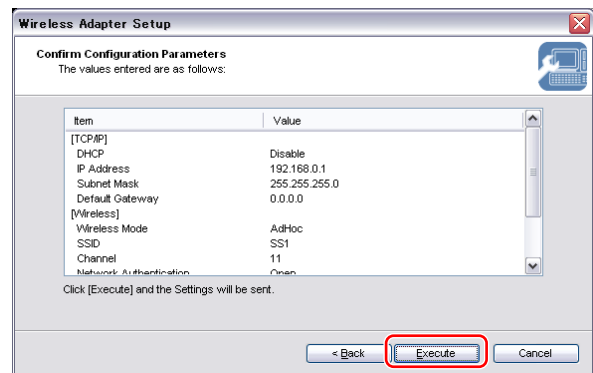
- 9 Select “Assign IP Address,” enter the IP address (“192.168.0.1” in the screen example) and the Subnet Mask (“255.255.255.0” in the screen example), and then click [Next].



Memo

Write down the IP address entered here, as you will need it later for digital camera setup.

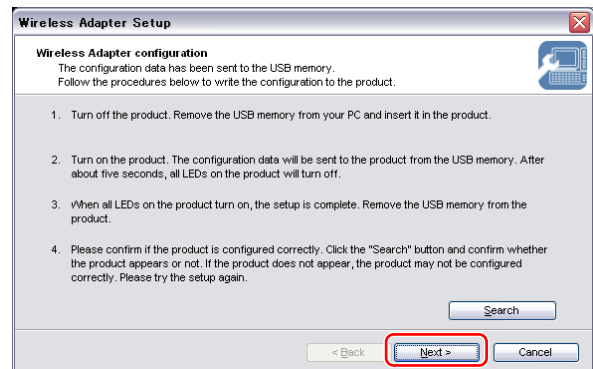
- 10 Select “AdHoc” as the Wireless mode, enter any desired SSID (“SS1” in the screen example), and then click [Next].



Memos

- If another wireless device is using the same channel, select another channel.
- In AdHoc mode, network authentication can be set to Open or Shared. When setting up the digital camera, select the same authentication method as selected here.

- 11 Confirm your settings, and click [Execute].

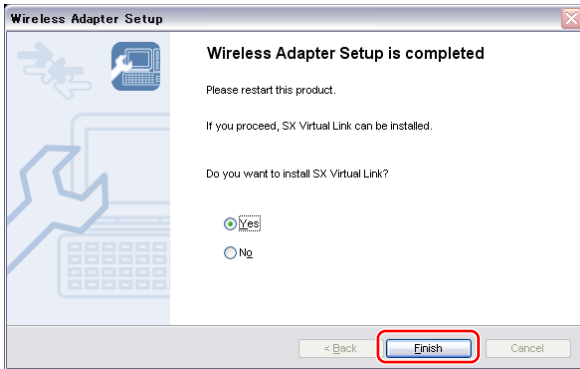


- 12 Follow the on-screen procedure to transfer the settings to the SX-WSG1.

- 1 Disconnect the AC adapter from the SX-WSG1, and connect the USB memory to the USB connector on the SX-WSG1.
- 2 Connect the AC adapter to the SX-WSG1. The power turns on, and all the LEDs on the SX-WSG1 turn off after about 5 seconds.
- 3 Remove the USB memory when the LEDs light again.
- 4 Restart the SX-WSG1.
- 5 Click [Next].

Notes

- The [Search] button cannot be used in AdHoc mode.
- The SX-WSG1 has no power button, so unplug and plug in the AC adapter to reboot it.



The above procedure completes SX-WSG1 setup. Click [Finish]. Install the SX Virtual Link as needed. Camera direct print does not require SX Virtual Link to be installed. Proceed to connect the SX-WSG1 to the UP-CR20L using a USB cable.

Digital Camera Setup

Perform the following procedure with the digital camera to be used. The setup procedure and setting names may differ depending on your digital camera. For details on settings, refer to the operating instructions supplied with the digital camera.

For reference, this manual includes the following table of setting names from two sample camera models.

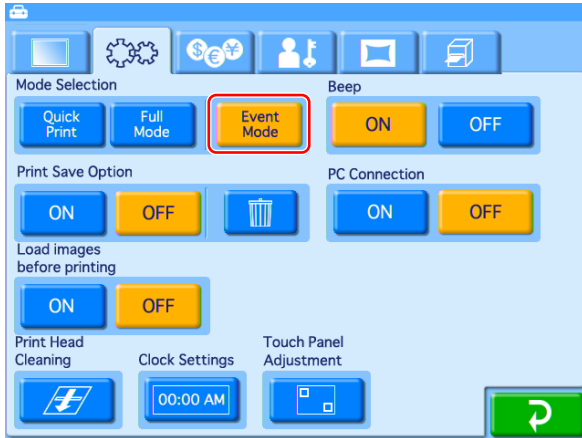
Setting label correspondence in different digital cameras

Name in this Guide	Nikon	Canon
	D300 (UC)	40D (UC)
SSID	SSID	SSID
Communication Mode	Communication Mode	
Communication Channel	Channel	Channel
Authentication	Authentication	Authentication
Encryption	Encryption	Encryption
DHCP	Obtain automatically	Auto setting
IP Address	Address	IP address
Subnet Mask	Mask	Subnet mask
Default Gateway	Use gateway	Gateway
DNS	Enable DNS	DNS address
FTP Server Address	Server Address	FTP server address
USER ID	User ID	Login name
Password	Password	Password
Default Folder	Server folder	Root folder
Anonymous	Anonymous login	Anonymous
Proxy server	Use proxy server	Proxy server
Port	Port	Port number setting

- For the sending destination SSID, enter the same SSID as for the SX-WSG1.
- Select the AdHoc communications mode.
- Set the channel, authentication and encryption to be the same as set for the SX-WSG1.
- Enter an IP address in the same local range as that entered for the SX-WSG1 (Input example “192.168.0.2”).
- Enter the same Subnet Mask as entered for the SX-WSG1 (Input example “255.255.255.0”).
 - * Gateway, DNS Address and Proxy Server settings are not necessary (not used).
- Enter the IP address of the SX-WSG1 as the FTP Server Address.
 - * Leave “21” as the Port setting (default).
- For the USER ID (login name), enter “root” (all lower case).
 - * Anonymous login is not available.
 - * There is no default SX-WSG1 password.
 - * There is no need to enter a root folder.

Printer Setup

Select Event Mode as the operation mode.



See the UP-CR20L Operating Instructions for setting details.

Setting Infrastructure Mode

See the SX-WSG1 Setup Guide and digital camera users manual for setting details.

SX-WSG1 Setup

See the SX-WSG1 Setup Guide for setting details.

Memo

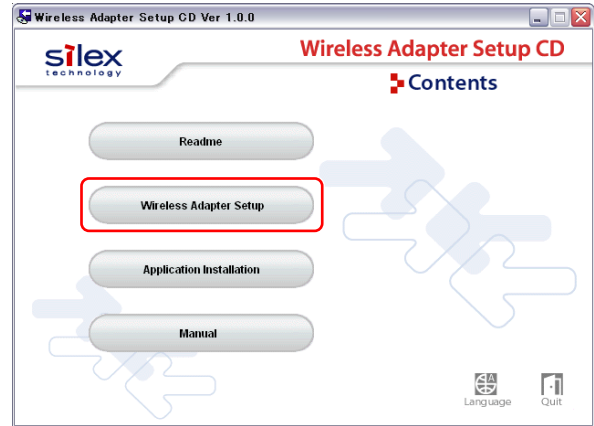
To perform direct printing from a digital camera, the IP address of the SX-WSG1 must be entered as the address of the FTP server in the digital camera. We suggest setting the IP address manually when using the infrastructure mode.

When the addresses are managed by a DHCP server, you need to confirm the IP address that it has assigned to the SX-WSG1. In this case, confirm the IP address by the following procedure.

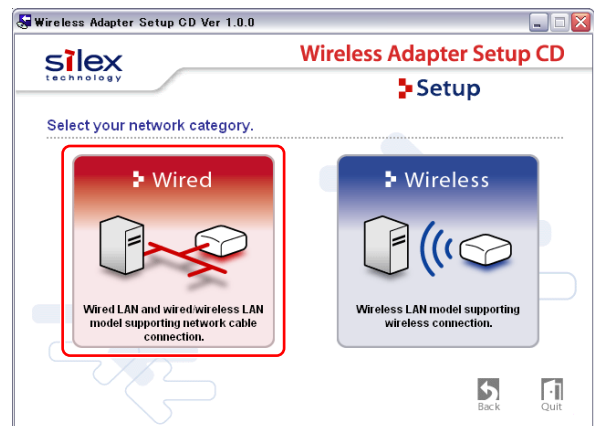
IP Address Confirmation

- 1 Using the Ethernet connection, connect the SX-WSG1 to the same network as the PC being used for the setup.

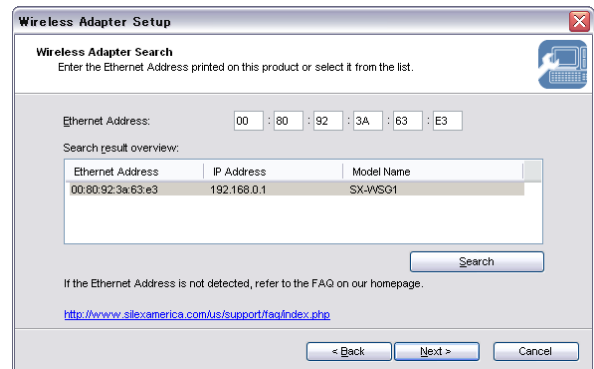
- 2 Start the Wireless Adapter Setup CD.



- 3 Click [Wireless Adapter Setup].



- 4 Select [Wired], read the license agreement, and click [Yes].



The IP address of the SX-WSG1 appears in the “IP Address” column. Confirm the IP address, and click [Cancel] to finish.

Digital Camera Setup

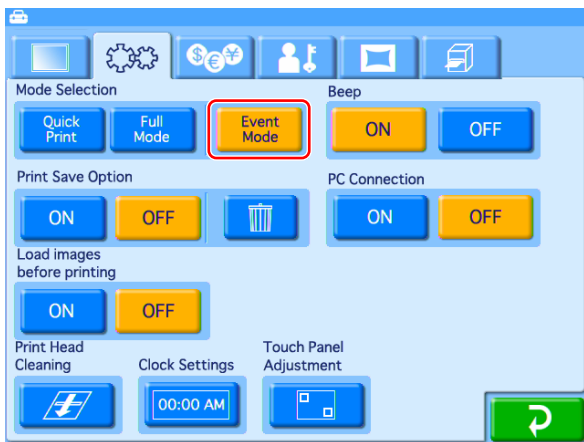
Make the following settings on the digital camera.

- For the sending destination SSID, enter the same SSID as for the SX-WSG1.
- Select the Infrastructure communications mode.

- Set the channel, authentication and encryption to be the same as set for the SX-WSG1.
- For manual setting, enter an IP address in the same local range as that entered for the SX-WSG1.
 - * The IP address may be automatically assigned by the DHCP server.
- Enter the same Subnet Mask as entered for the SX-WSG1 (Input example “255.255.255.0”).
 - * Gateway, DNS Address and Proxy Server settings are not necessary.
- Enter the IP address of the SX-WSG1 as the FTP Server Address.
 - * Leave “21” as the Port setting (default).
- For the USER ID (login name), enter “root” (all lower case).
 - * Anonymous login is not available.
 - * There is no default SX-WSG1 password.
 - * There is no need to enter a root folder.

Printer Setup

Select Event Mode as the operation mode.



See the UP-CR20L Operating Instructions for setting details.

Basic Operations

Image Transfer and Printing

Use this procedure to print image files transferred from a digital camera. When printing finishes, transferred image files are deleted from the expansion CompactFlash card. You can also store the files on the expansion CompactFlash card by configuring the save options.

Transferring Image Files from a Digital Camera

Refer to the digital camera's operating manual for camera operating details.

When starting to transfer image files, the following screen appears.

Other operations are disabled while this screen is displayed.



When printing finishes, the starting screen reappears.

Notes

- **Printable image file format**

Only JPEG format image files can be printed. Some digital cameras can transfer RAW format image files, although they cannot be printed on this printer. Also, be aware that JPEG files are deleted after printing, but RAW files are not.

- **Print area**

The print area on the printing paper depends on the image aspect ratio and the paper size to be printed. Image scaling and position adjustments are not available with direct printing, so image composition needs to be considered at the time the photos are taken. However, in the "Print from saved folder" case, image scaling and position adjustments are available.

- **Cut mode**

Print size for direct printing depends on the print pack installed in the UP-CR20L. Be aware of the following when selecting Cut mode.

Cut mode normally prints images in pairs, but with direct printing, only the first image prints on the first sheet. Also, depending on the number of images, the last image may also print on one sheet, resulting in print pack wastage.

Therefore, when direct printing, we suggest setting the Cut mode off, or using 2UPC-R203 or -R204 print packs.

See "Setting Cut Mode" in the UP-CR20L Operating Instructions if you plan to print 3.5 × 5 or 4 × 6 size with the 2UPC-R205 -R206 or -C26 print pack.

Printing is performed automatically using the "Largest size" setting for Cut mode.

Setting Example

To print 3.5 × 5 or 4 × 6 size with a 2UPC-R205, -R206 or -C26 print pack:



Customized Border Printing

You can apply customized borders to images transferred from a digital camera. This function is useful when you want to consistently print with a customized shop logo or an event template.

1 Create the border image.

Enter "__SnapLabPrintLogo" (with the double underbar prefix) as the name of the border image. See the UP-CR20L Operating Instructions and the PNG Export Tool Setting Guide for border image file creation and handling procedures.

- 2 Insert the expansion CompactFlash card containing the saved border image into the expansion slot on the UP-CR20L.

Note

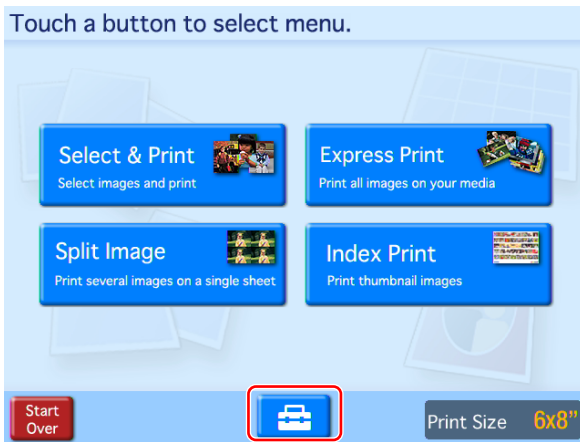
When multiple paper sizes are to be used, a border image must be provided for each paper size.


When finished setup, touch the [OK] button to return to the previous screen. Subsequent operations are the same as for regular printing.

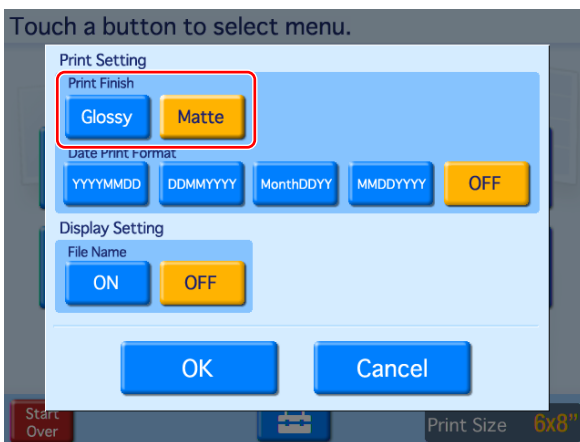
Selecting the Print Finish

Either Glossy or Matte print finish can be selected. This setting is preserved for subsequent print sessions.

- 1 Prepare the memory card or USB memory with the saved images, and display the main menu.



- 2 Touch [ (Setup)] to display the print settings.



- 3 Select Glossy or Matte print finish and press [OK] to return to the main menu.

- 4 Remove the memory card or USB memory.

Subsequent operations are the same as for regular printing.

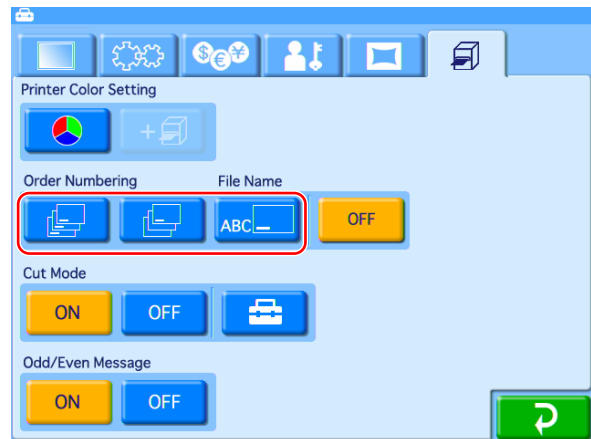
Watermarking Order Numbers or File Names on Prints

This setting determines whether the order number or file name is printed on the prints. The order numbers or file name is printed as a watermark on the edge of the photo.

Memo

The file name printed is that saved in the digital camera.

Open the Print tab on the administration screen and then touch [Order Numbering] or [File Name].



 **(Print all)**

Prints the order number on all prints.

 **(Print first only)**

Prints the order number only with the first image of each order. If you print multiple copies of the first image, the order number is printed on each print.

 **(Print file name)**

Prints the file name of the image on each print.

Note

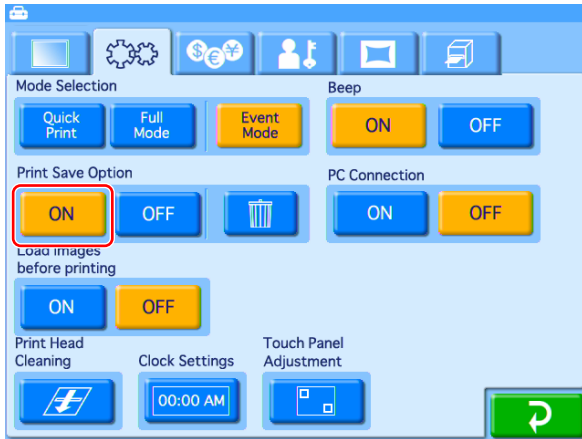
File names to be printed may contain only alphanumeric characters.

OFF

No order number or file name is printed.

Saving Transferred Image Files

Image files transferred from a digital camera can be saved to a “Save Folder” on the expansion CompactFlash card. To enable saving, set the “Print Save Option” to [On] on the System tab of the administration screen.



Note

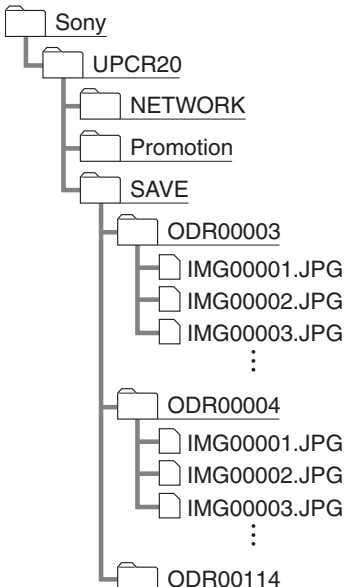
Image files saved to an expansion CompactFlash card are not automatically deleted, So be sure that sufficient space is available before saving image files.

SAVE Folder Directory Structure

The directory structure of the save folder will differ depending on the firmware version. For details on how to confirm the firmware version, refer to “Displaying the System Log” in “Chapter 5 Maintenance” of the UP-CR20L operating instructions.

For V1.00 and V1.01

Image files will be saved to the “order number” folders that are automatically created in the SAVE folder.

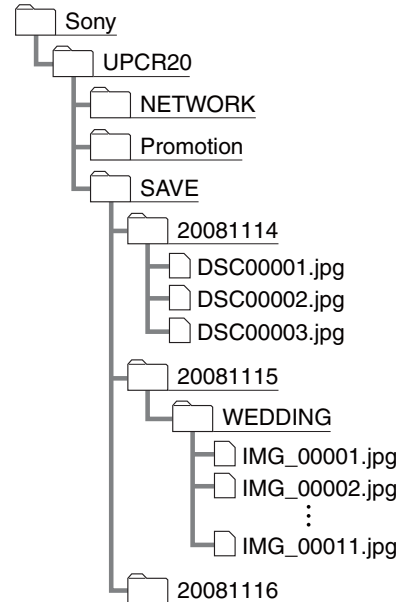


Note

The file names will be numbered starting with “IMG00001.JPG” and stored in the order number folders. Be aware that these names differ from the file names stored on the digital camera.

For V1.02 or later


Image files will be saved to the “date” folders (ex: 20081114) that are automatically created in the SAVE folder under folder names and file names identical to those specified with the digital camera during transfer.

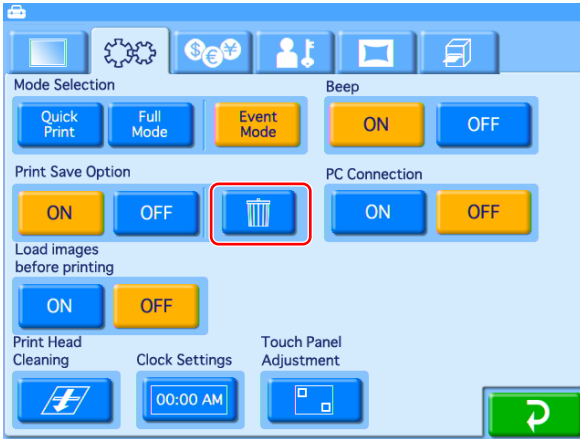


Note

Be careful when transferring identical folder names and file names from the same date, as the data will be overwritten.

Deleting Image Files from the Save Folder

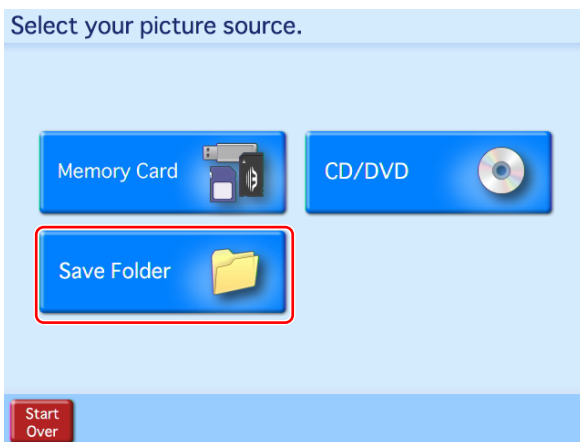
To delete image files in the Save Folder, touch the [ (trash bin)] Print Save option on the System tab of the administration screen.



Printing from the Save Folder

To reprint a photo, select its image file in the Save Folder.

- 1 Touch the Start screen.
- 2 Touch the [Save Folder] button.



Subsequent operations are the same as for regular printing.

<http://www.sony.net/>

Sony Corporation