

Windows NT4.0 Printer Driver on Windows2000 (SCSI Connection)

*This explanation is the case of the UP-D2600S printer driver installation.

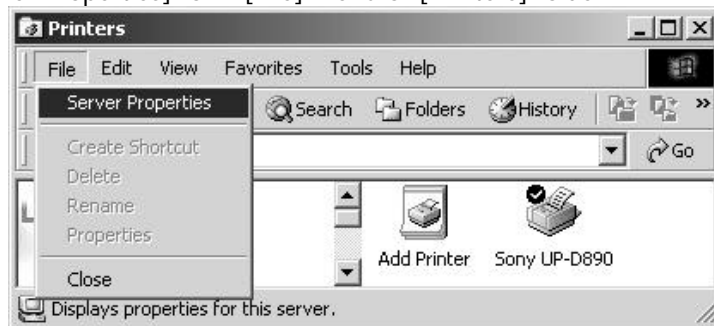
(Installation)

<Installation of ASPI manager>

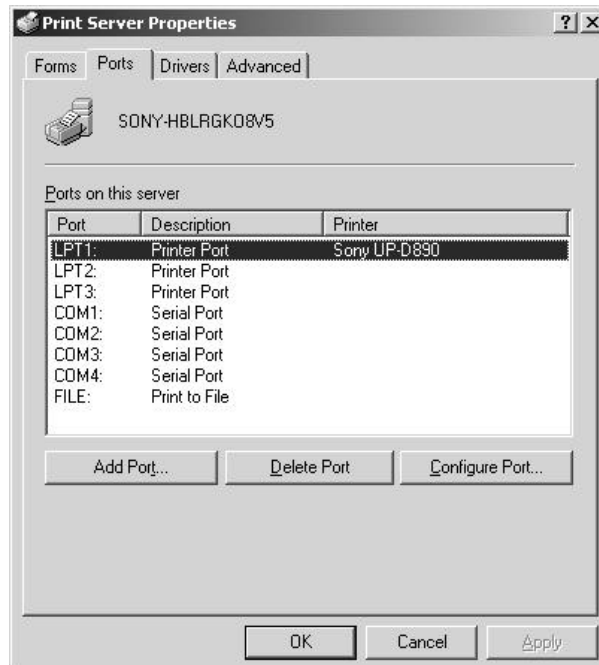
ASPI manager is not originally installed on Windows2000. In order to connect the printer via SCSI, you need to install ASPI manager bundled with a SCSI adapter. Please refer to the SCSI adapter manual for detail about ASPI manager installation.

<Installation of UPD port>

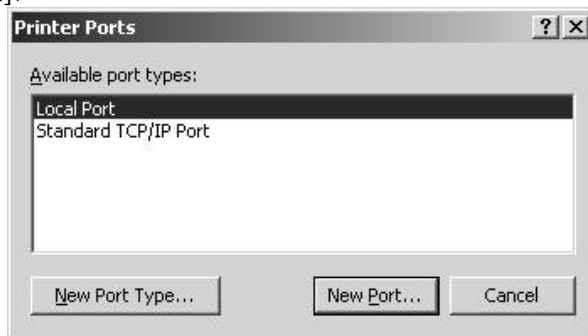
1. Connect the printer to your PC.
2. Power on the printer.
3. Start up the Windows2000 and login as the Administrator.
4. Choose [Server Properties] form [File] menu of [Printers] folder.



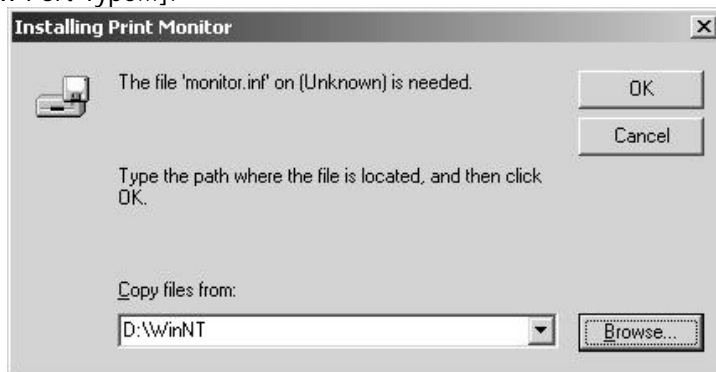
5. Choose [Ports].



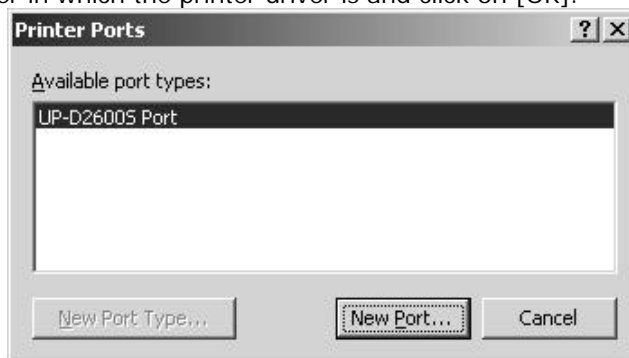
6. Click on [Add Port].



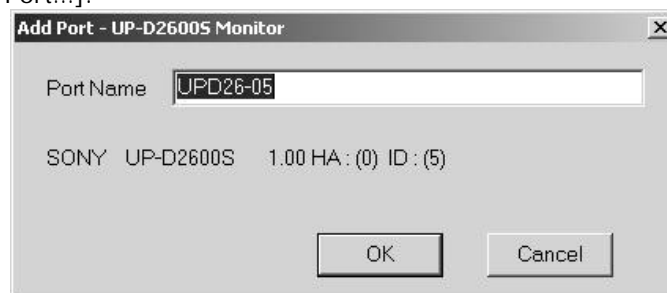
7. Click on [New Port Type...].



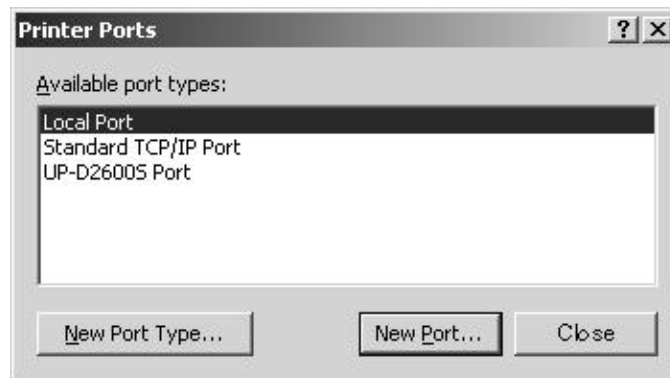
8. Specify the folder in which the printer driver is and click on [OK].



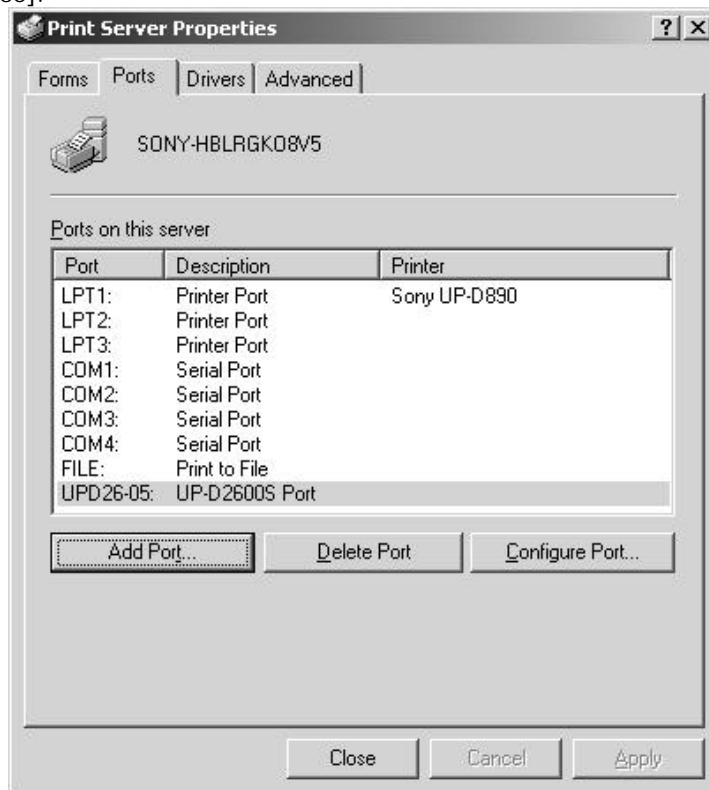
9. Click on [New Port...].



10. Check that "UPD26-XX" (XX is SCSI ID of the printer) is displayed in [Port Name] and click on [OK].



11. Click on [Close].



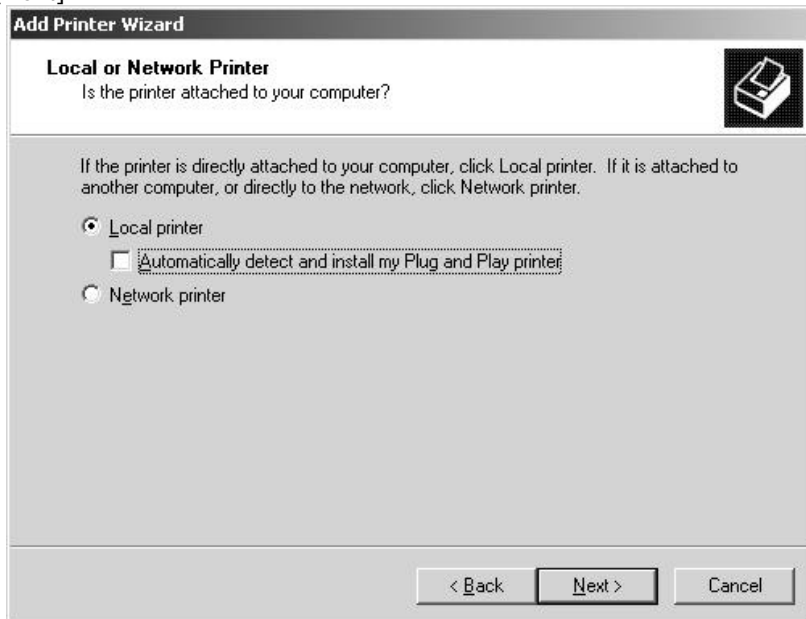
12. Check that "UPD26-XX" is added to [Ports on this server] and click on [Close]. This completes the UPD port installation. Please continue to the printer driver installation.

<Installation of the printer driver>

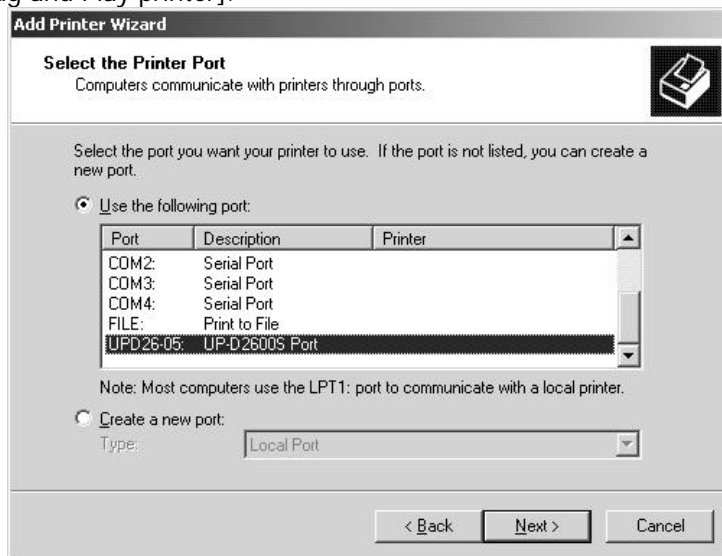
1. Double click on [Add Printer] in [Printers] folder. The following wizard starts.



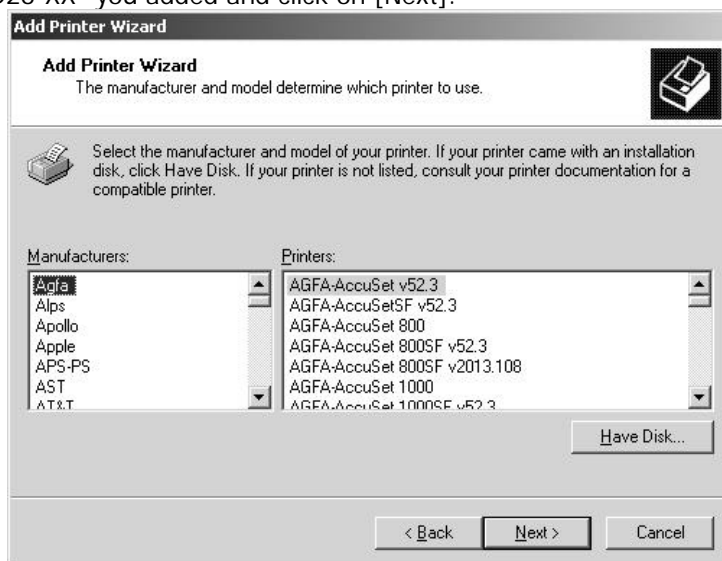
2. Click on [Next].



3. Choose [Local printer] and click on [Next]. Please do not click [Automatically detect and install my Plug and Play printer].



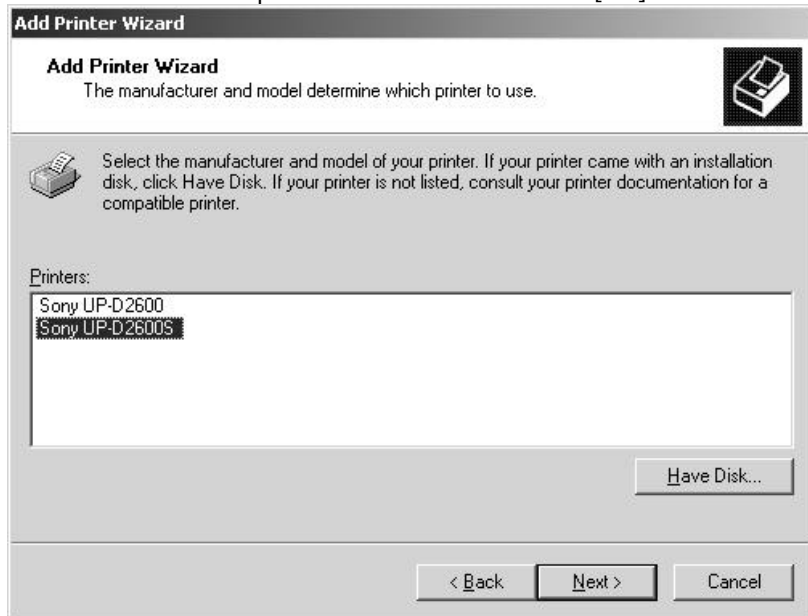
4. Choose "UPD26-XX" you added and click on [Next].



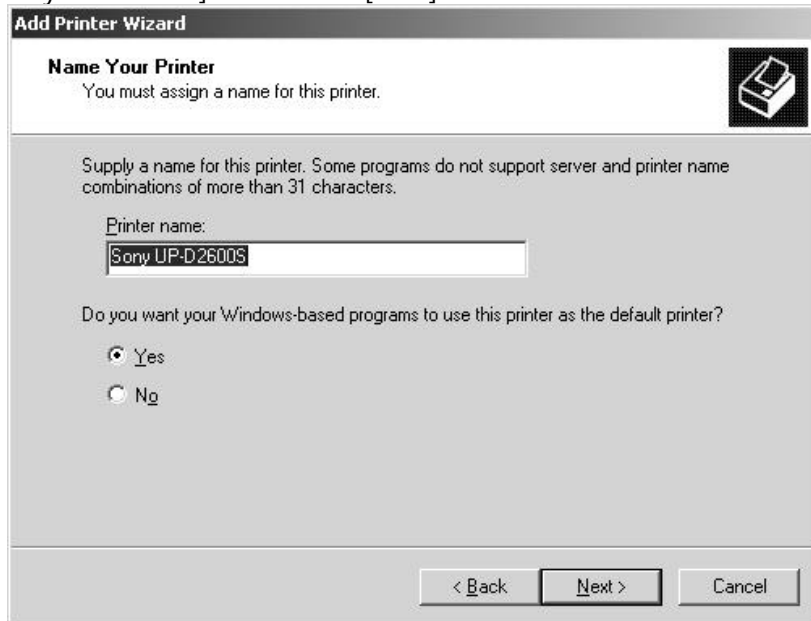
5. Click on [Have Disk...].



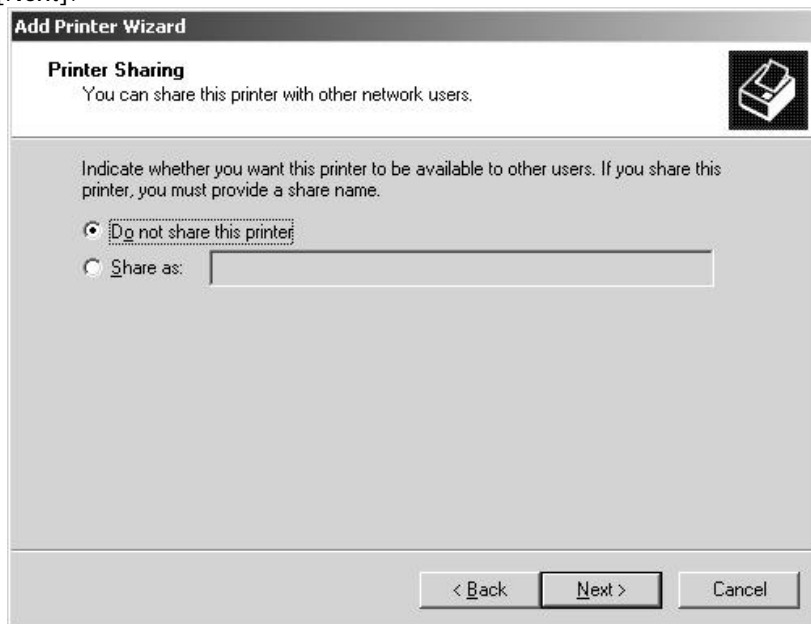
6. Specify the folder in which the printer driver is and click on [OK].



7. Choose [Sony UP-D2600S] and click on [Next].



8. Click on [Next].



Add Printer Wizard

Printer Sharing
You can share this printer with other network users.

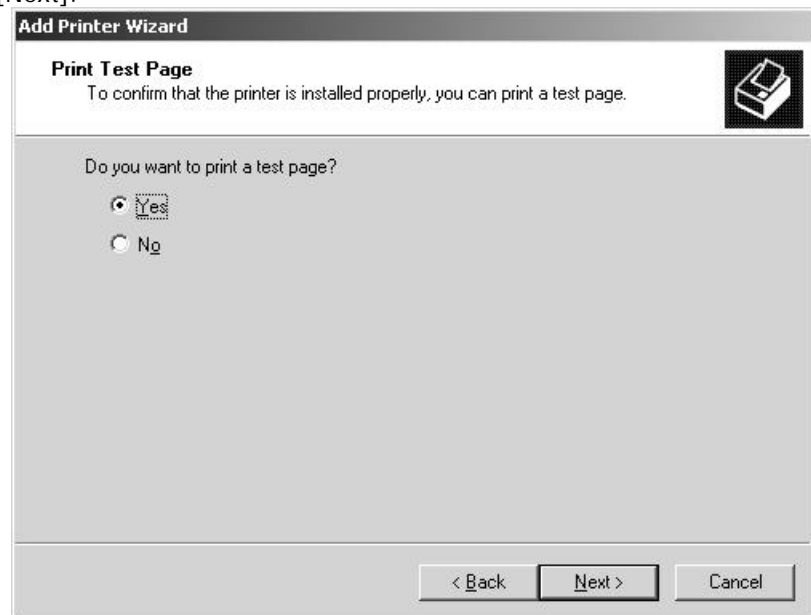
Indicate whether you want this printer to be available to other users. If you share this printer, you must provide a share name.

Do not share this printer.

Share as:

< Back Next > Cancel

9. Click on [Next].



Add Printer Wizard

Print Test Page
To confirm that the printer is installed properly, you can print a test page.

Do you want to print a test page?

Yes

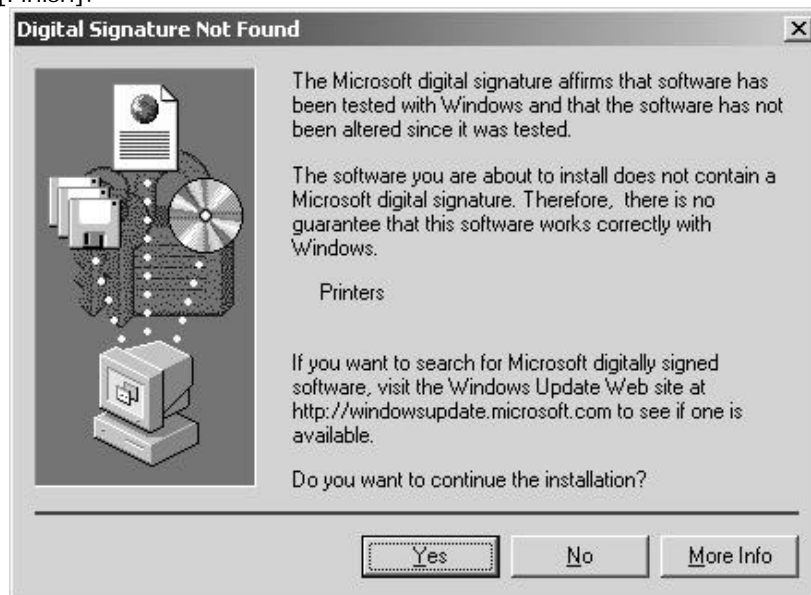
No

< Back Next > Cancel

10. Click on [Next].



11. Click on [Finish].



12. Click on [Yes]. This completes the installation.