

## Windows NT4.0 Printer Driver on Windows2000 (Parallel Connection)

\*This explanation is the case of the UP-D890 printer driver installation.

### (Installation)

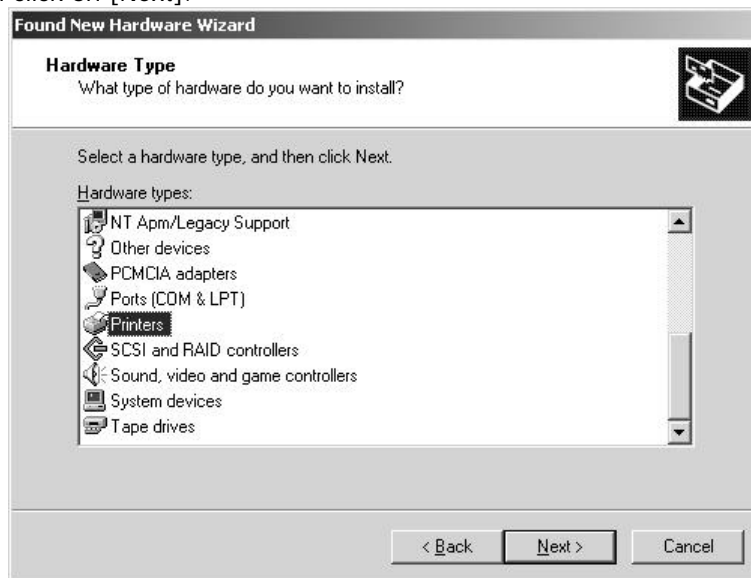
1. Connect the printer to your PC.
2. Power on the printer.
3. Start up the Windows2000.
4. The following dialog is displayed during startup. (If not, please install from [Add printer] in [Printers] folder.)



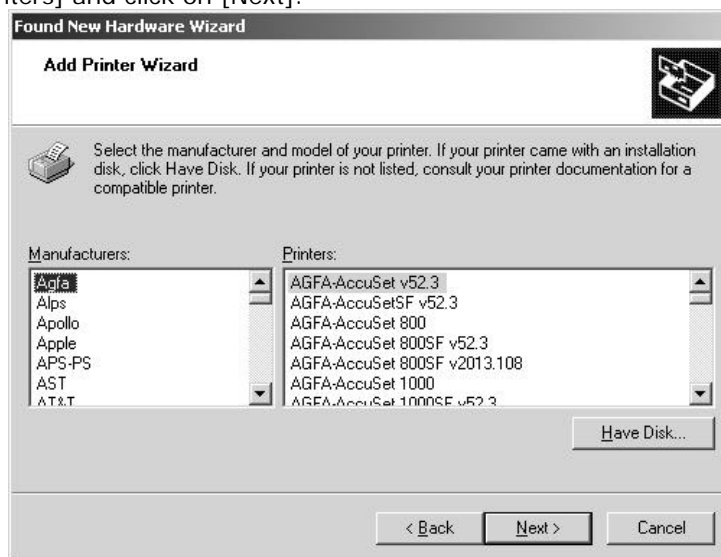
5. Click on [Next].



6. Choose [Display a list of the known drivers for this device so that I can choose a specific driver] and click on [Next].



7. Choose [Printers] and click on [Next].



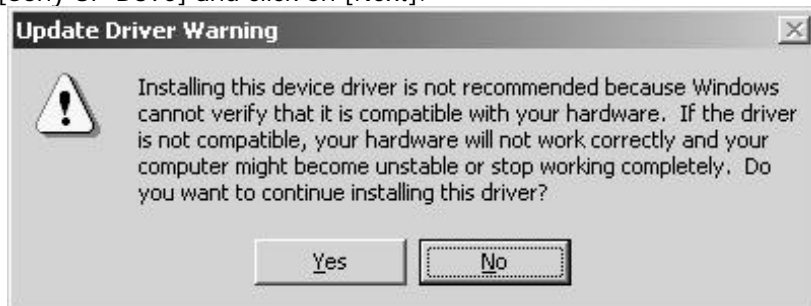
8. Click on [Have Disk...].



9. Specify the folder in which the printer driver is and click on [OK].



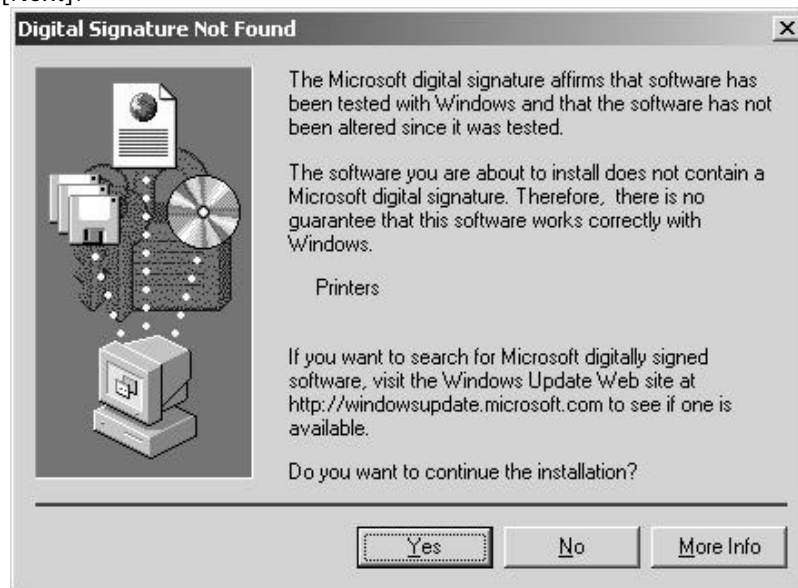
10. Choose [Sony UP-D890] and click on [Next].



11. Click on [Yes].



12. Click on [Next].



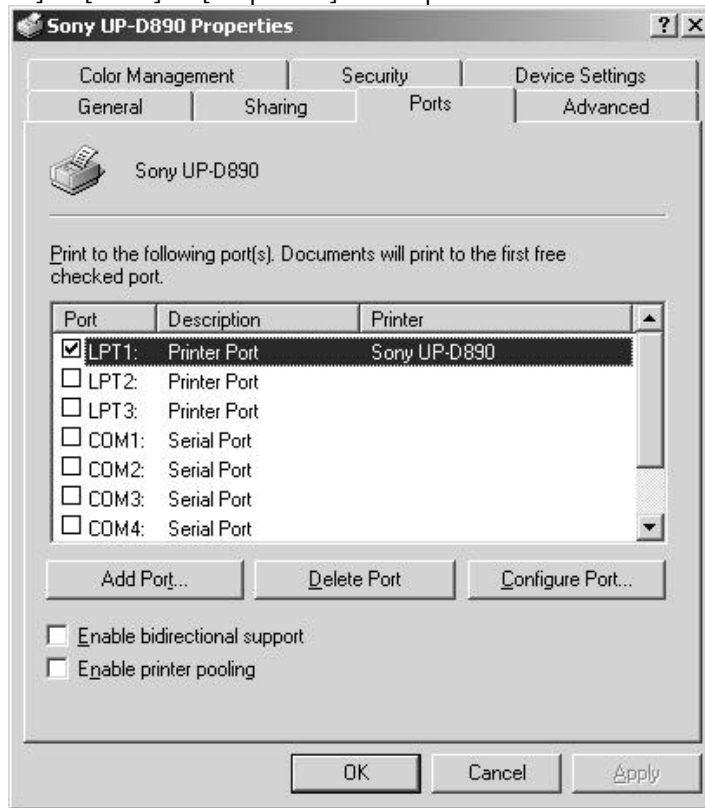
13. Click on [Yes].



14. Click on [Finish]. This completes the installation.

**(Port setting)**

Bi-directional communication does not work correctly. So, please do not click [Enable bidirectional support] in [Ports] in [Properties] of the printer.



In case you OFF the bidirectional communication as above, there are following limitations.

- Detailed status error is not displayed.
- Even if you cancel the jobs in spooler, printer is not reset. To start printing again, please restart the printer.

**(About ECP mode)**

Even if you set the BIOS of your PC to ECP, it does not work in ECP mode. Now the cause is under investigation.